

# M2D7: Data analysis

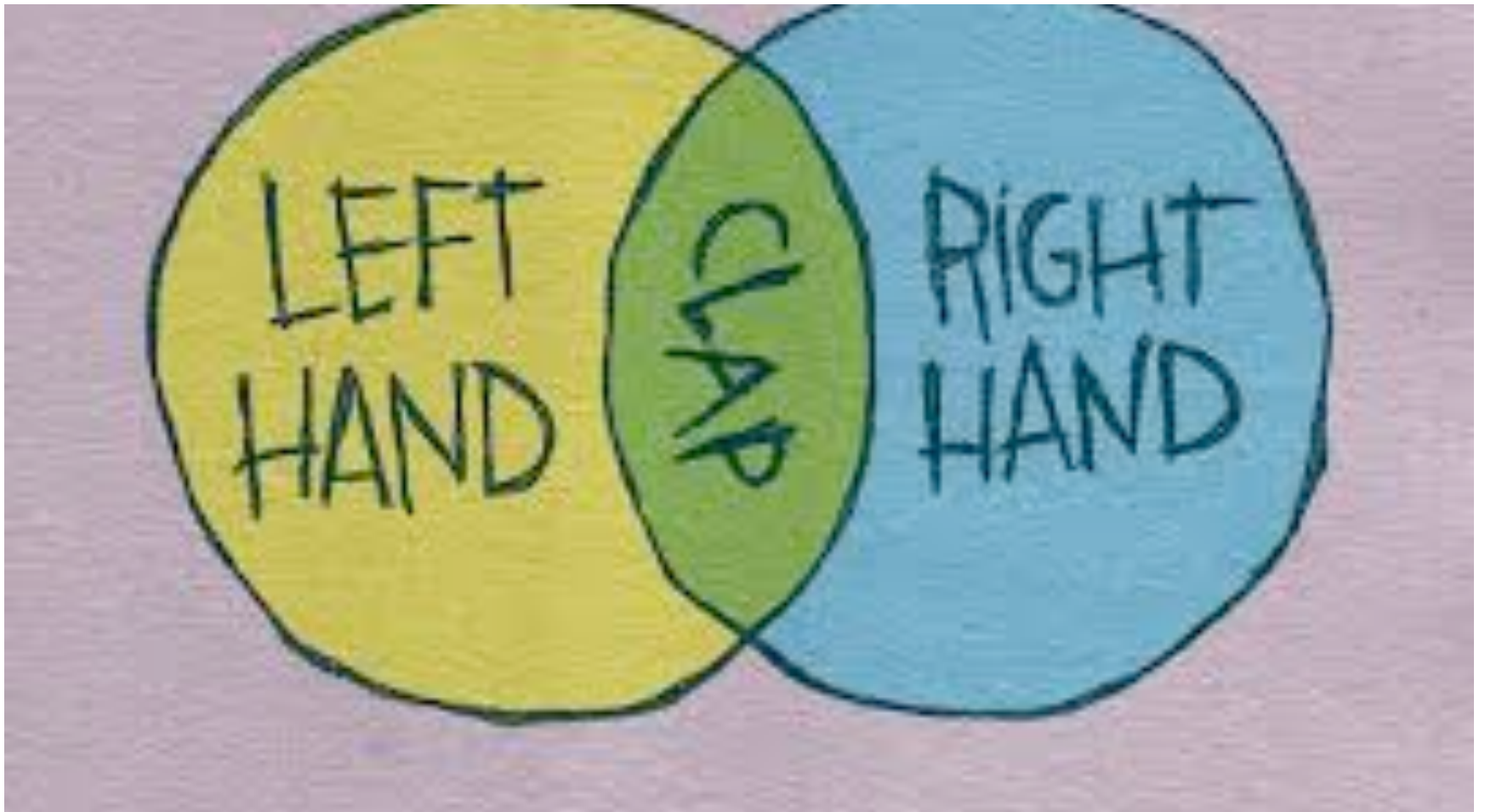
4/8/15

# Lab business

- Lab treat...
- (Extra) office hours
  - Noreen: M and R 2-4p, F 9-11a, Su 10-12p
  - Leslie: M and R 1-2p
  - Shannon: W 2-4p, F 3-5p, Su 10-12p
- Module 3 will begin next time
  - Read overview and M3D1 pages



Thank you, Nova!



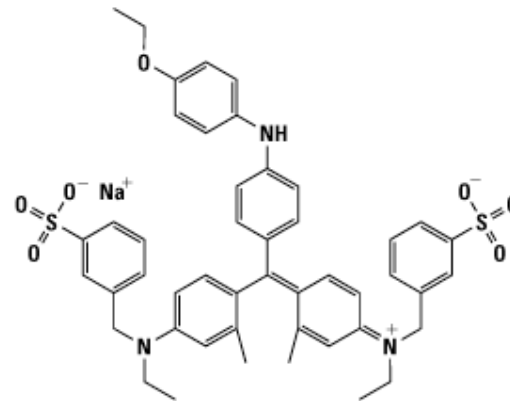
# Kill curve measurements

## Day 5

1. Plate cells without and with [increasing drug]
2. Irradiate

## Day 7

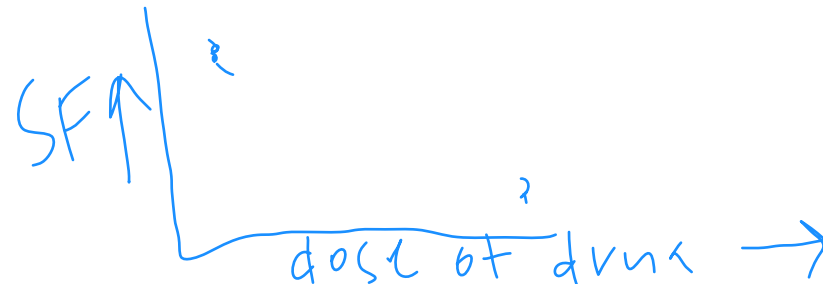
1. Stain with Coomassie
2. Count colonies



Coomassie Brilliant Blue G-250 Dye  
C<sub>47</sub>H<sub>48</sub>N<sub>3</sub>NaO<sub>7</sub>S<sub>2</sub>  
MW 854.02



$$SF = \frac{(\# \text{ of colonies/well})_{\text{dose } X}}{(\# \text{ of colonies/well})_{\text{No drug}}}$$



# Possible research questions

1. Does inhibitor inhibit NHEJ?
2. Does damage topology affect NHEJ?
3. Ku80

# Today

- Stain and count your irradiated cells and plot your data
  - Post your counts to M2D7 Talk page
- Complete the statistics exercise
  - Perhaps during the 1hr incubation step of the staining procedure 😊
- Use this class time to analyze the class flow cytometry data and ask questions

M2D5 due by 10 pm TODAY!