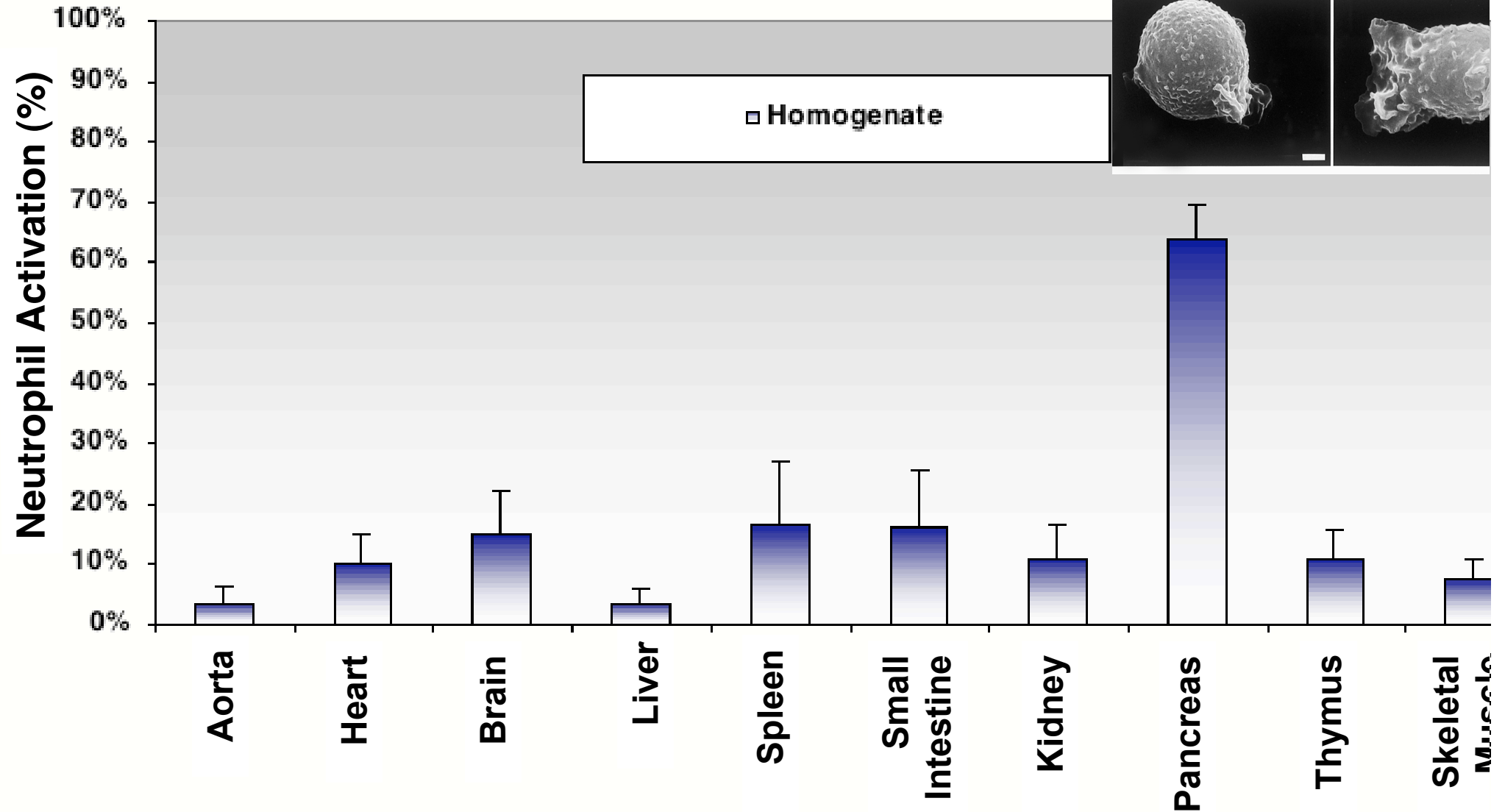


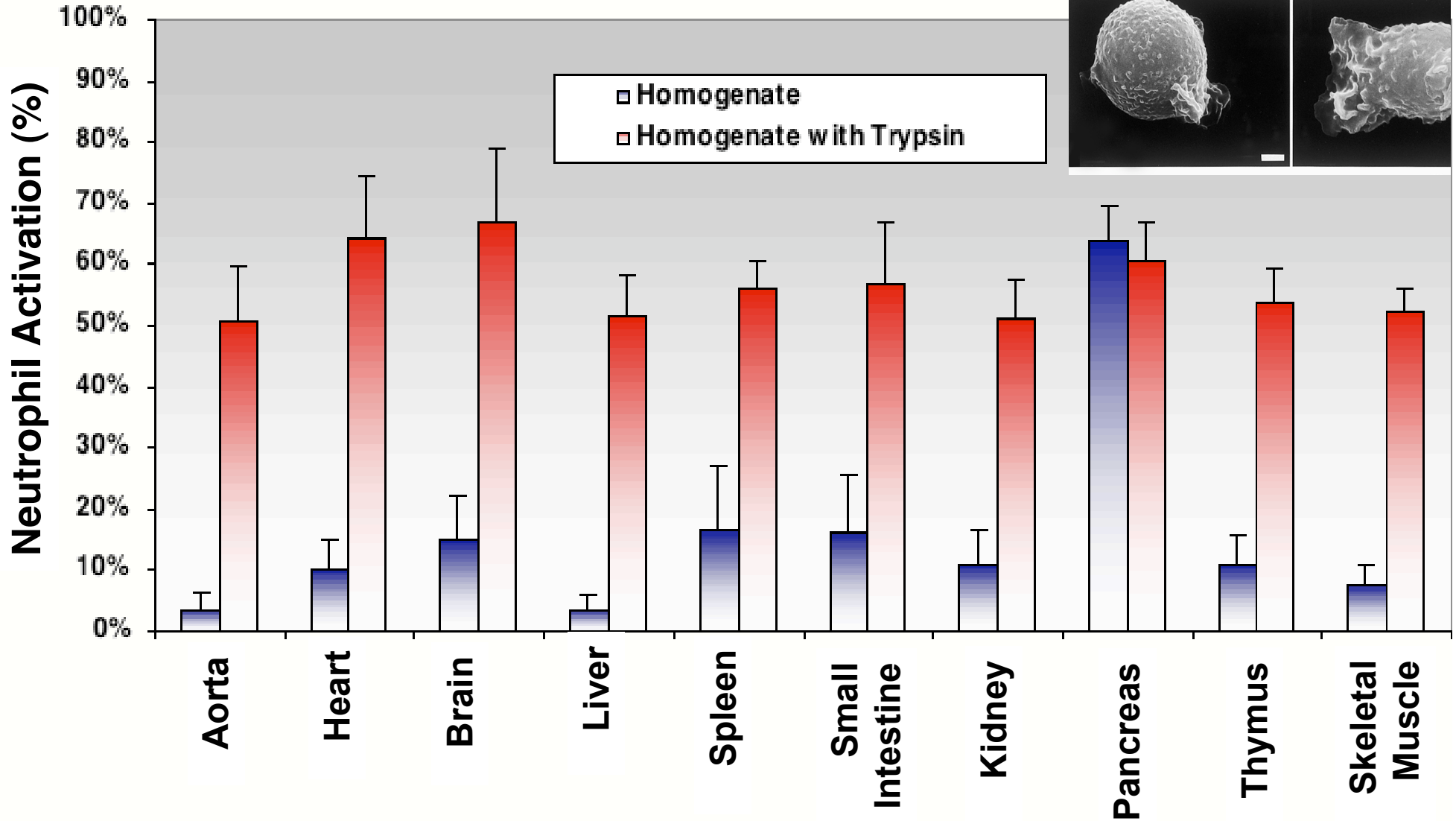
Cellular Activation By Tissue Homogenates

(n=6)



Cellular Activation By Tissue Homogenates

(n=6)



Part Pro

Prote

- Try
- Ch
- Pro
- Pro
- Pro

Amyl

- An

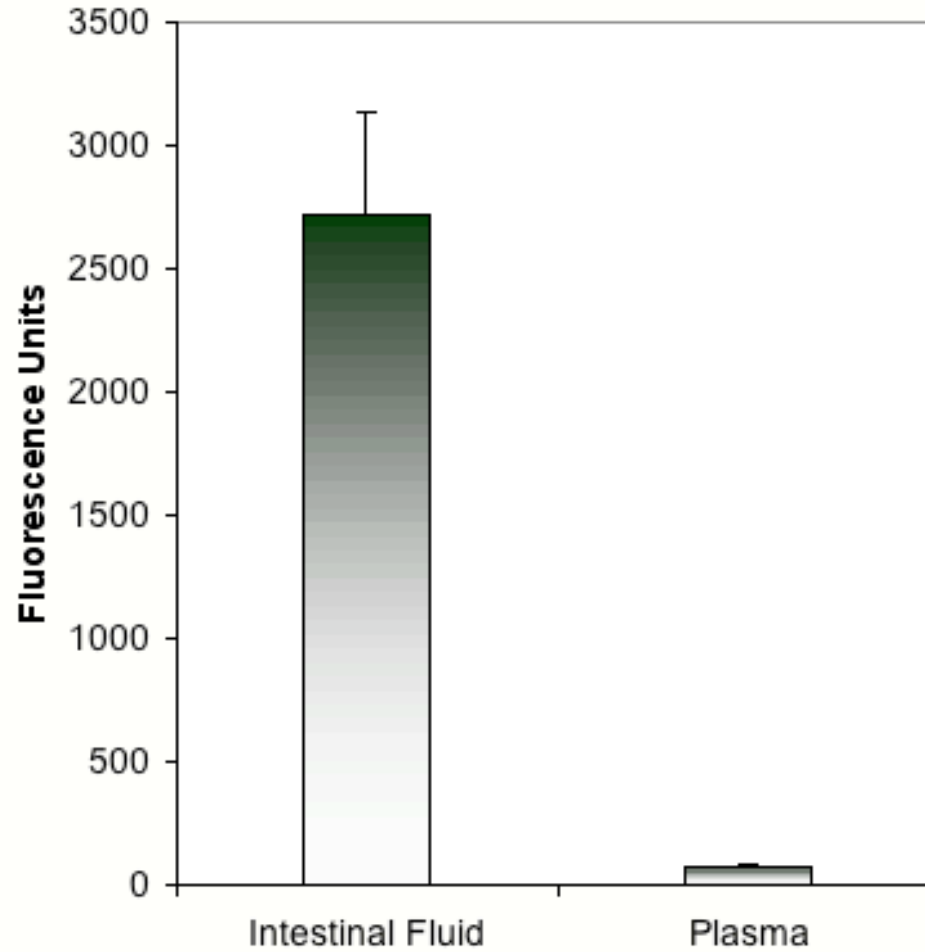


S_F



g sto

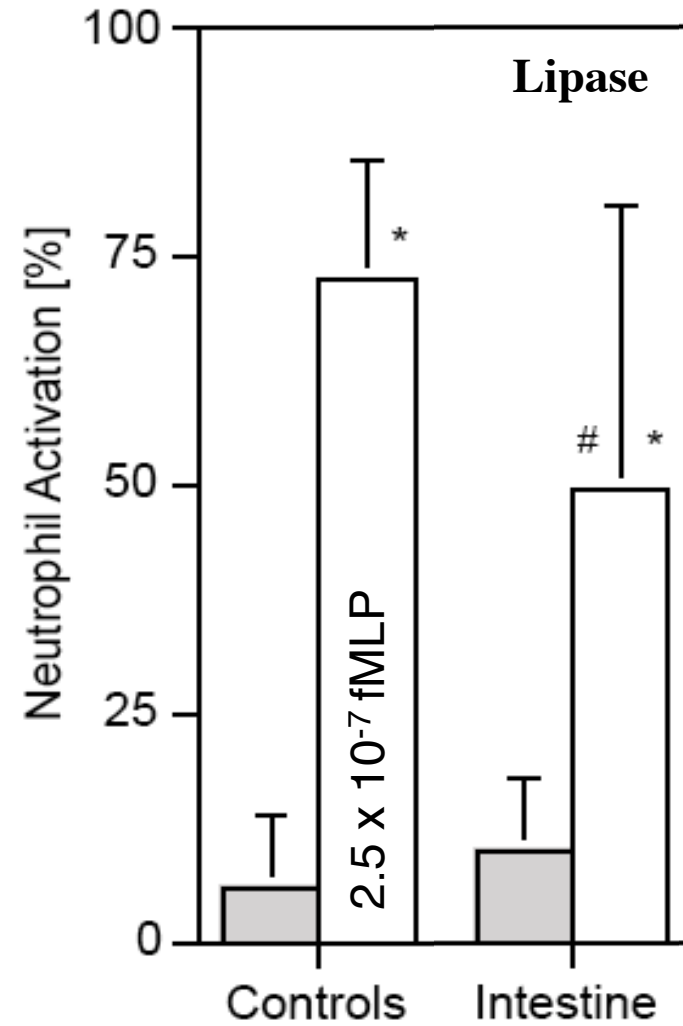
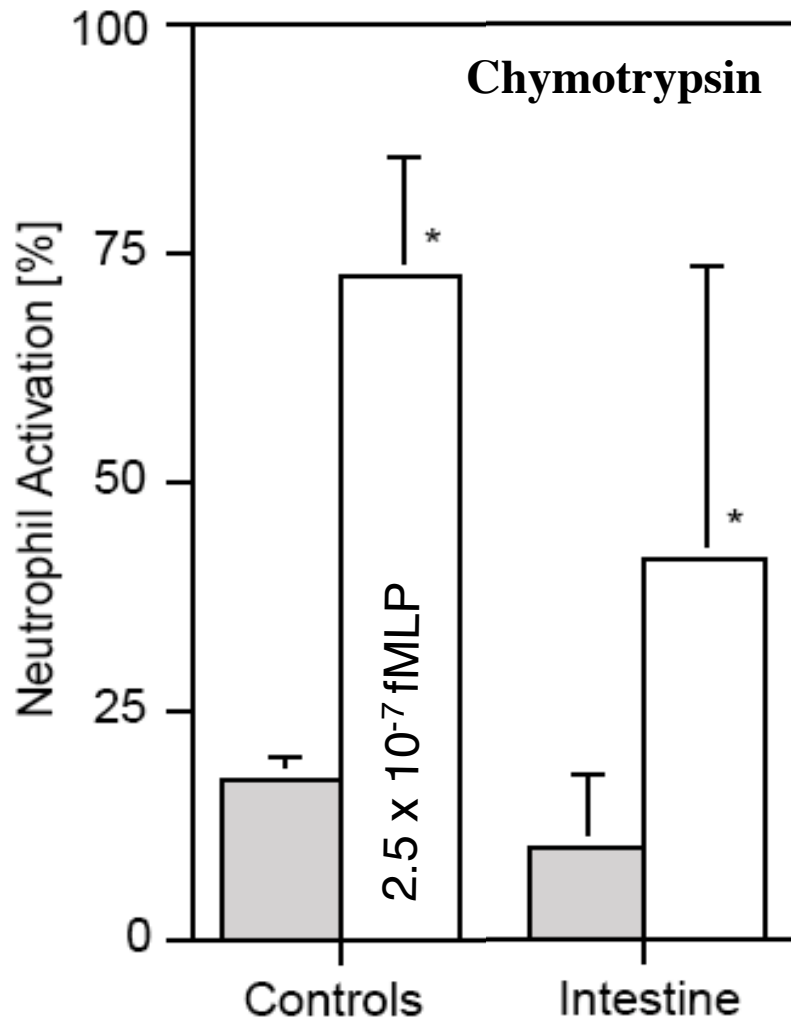
Comparison: Protease Activity *Intestinal Fluid and Shock Plasma*



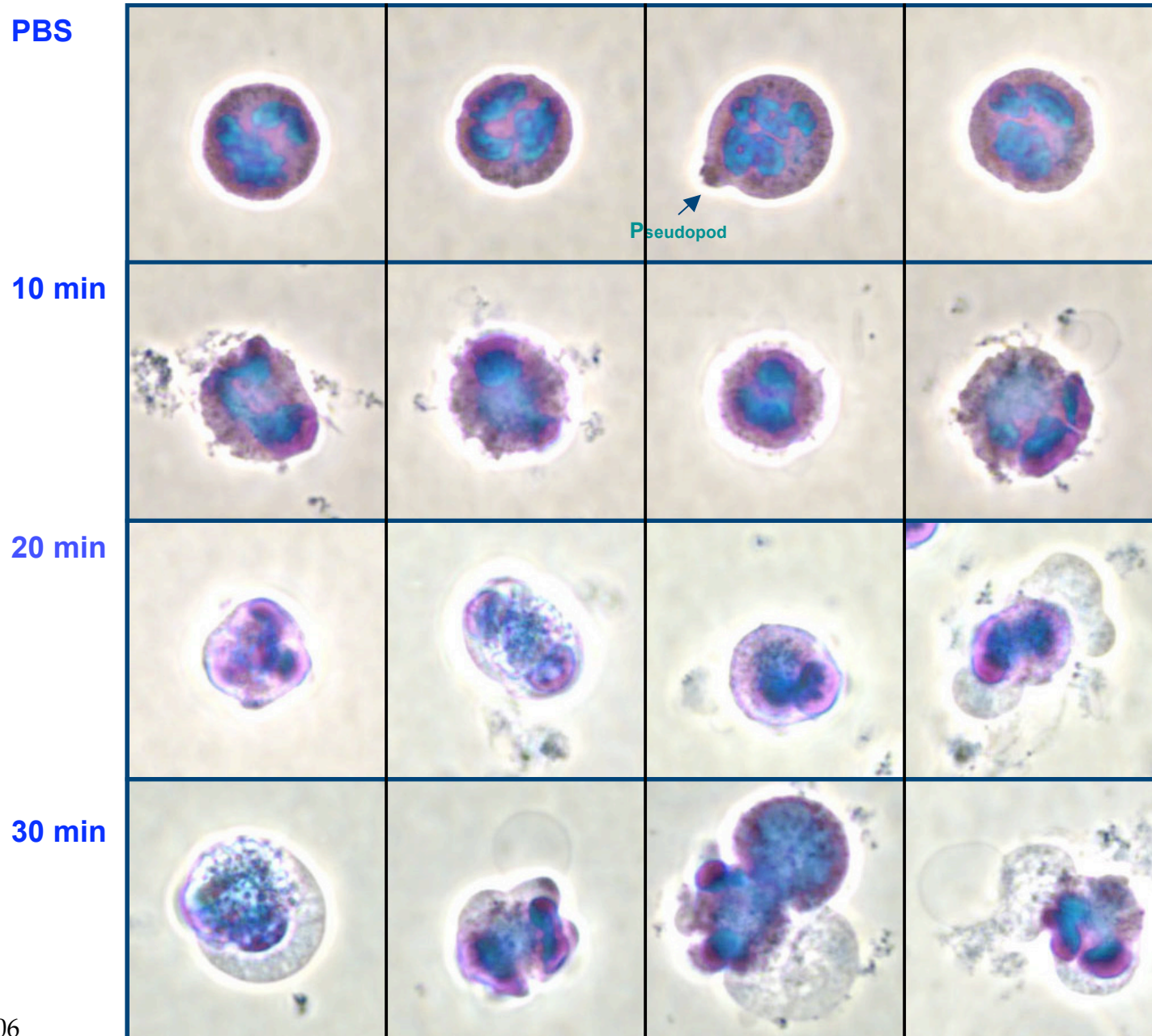
Waldo et al, 2003

Hydrolyse proteins, carbohydrates, lipids, nucleic acid

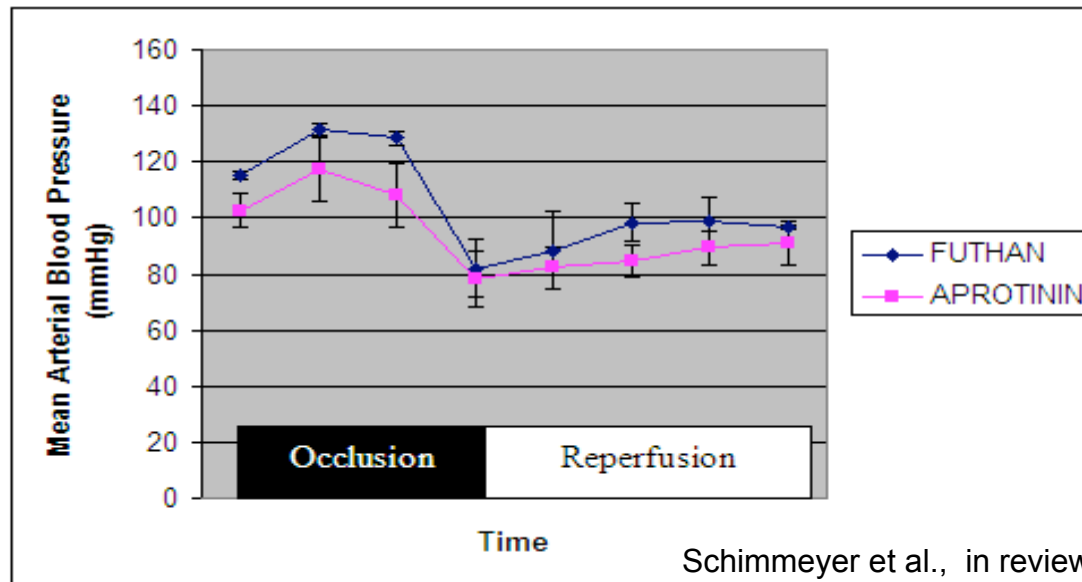
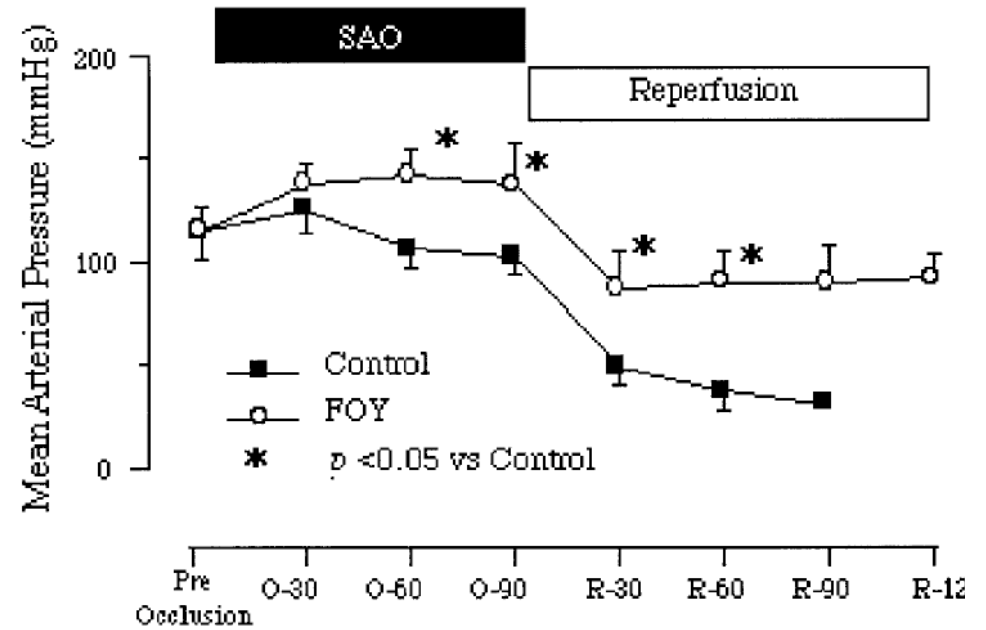
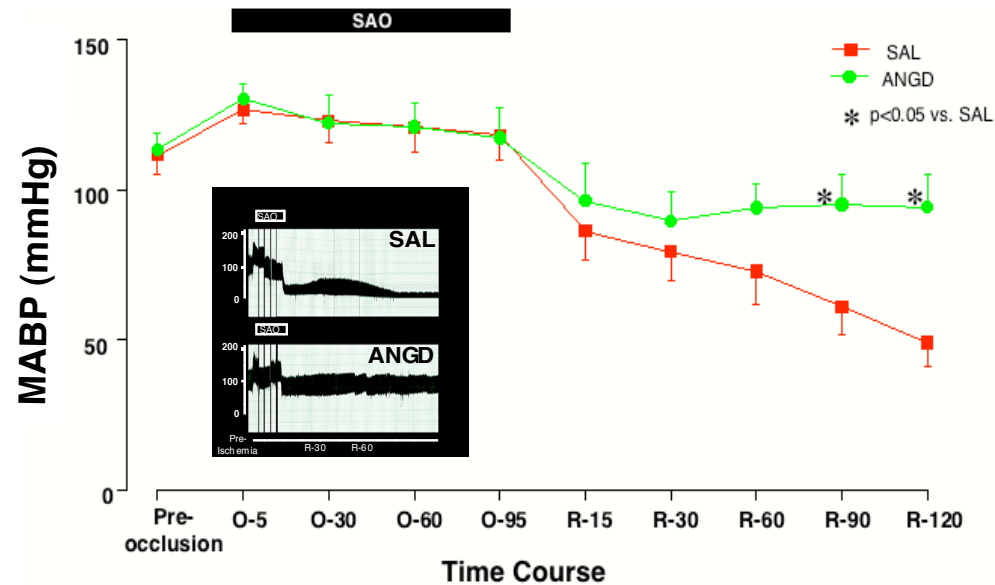
Pancreatic Enzyme Derived Inflammatory Mediators



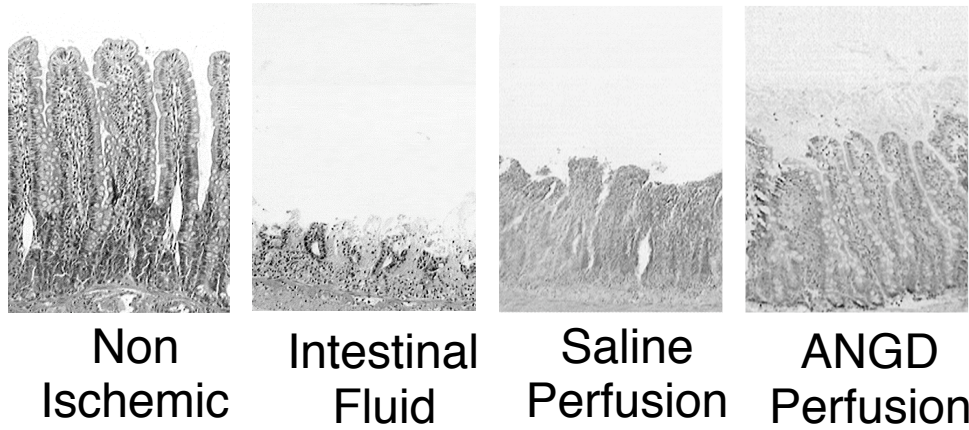
Organ homogenates with pancreatic enzymes produce cell death



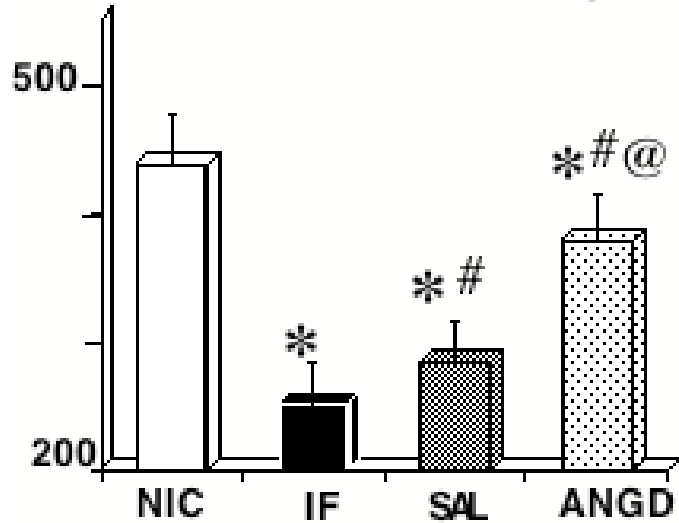
Pancreatic Digestive Enzyme Blockade with ANGD, FOY® (Gabaxate mesilate), and Aprotinin



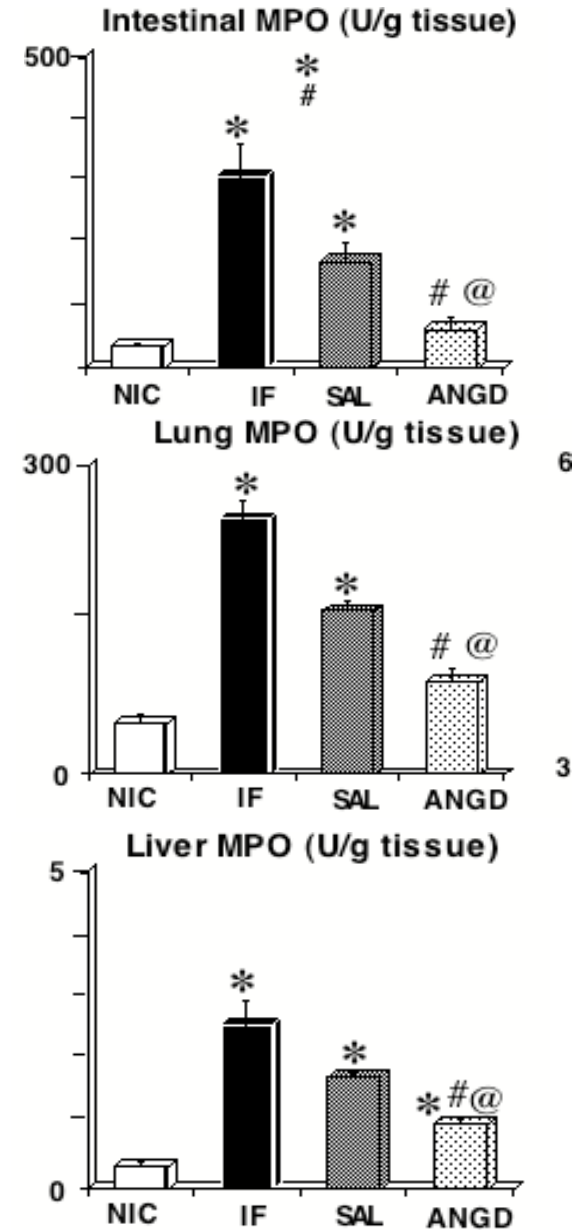
Intestinal Mucosal Injury



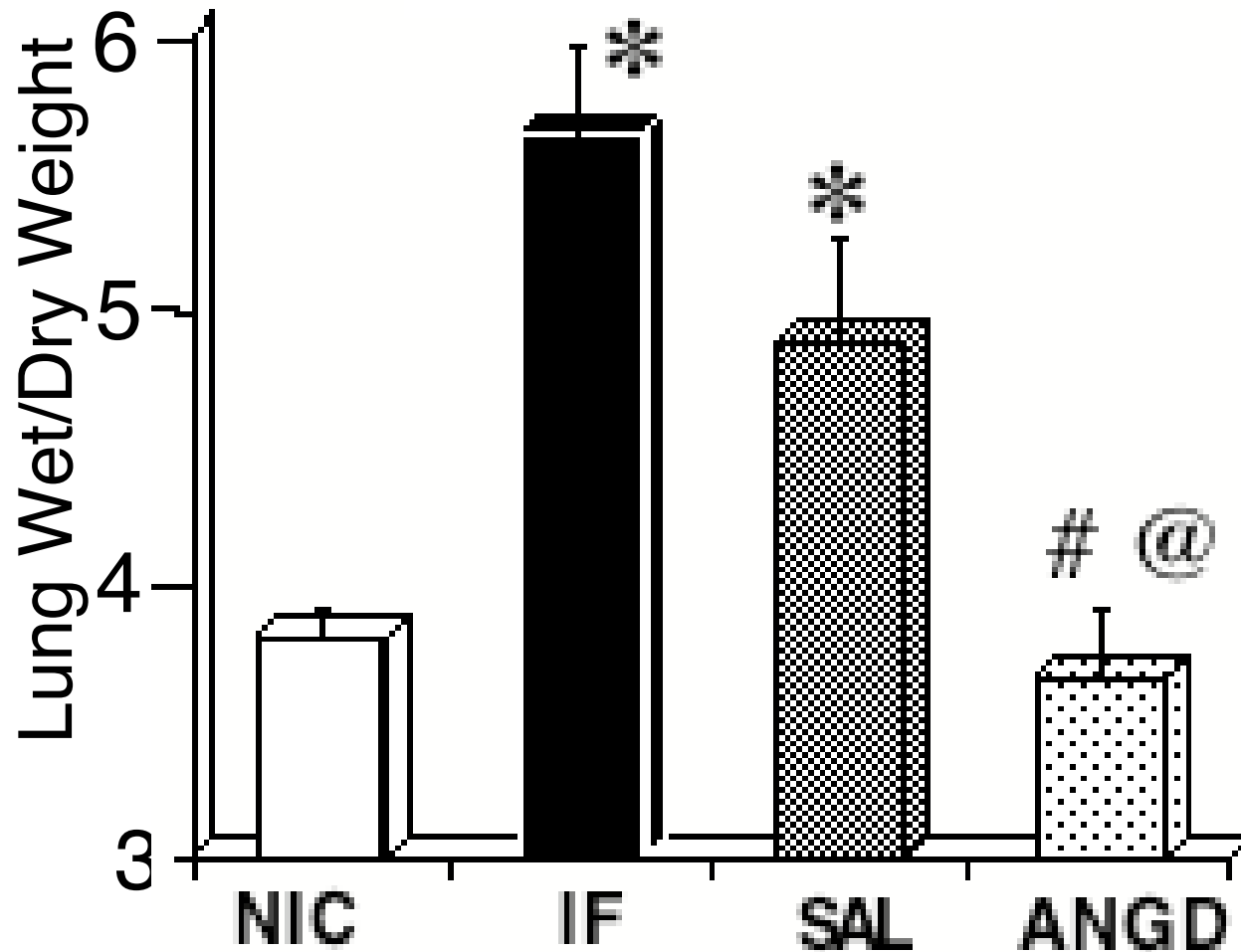
Mucosal Thickness (μm)



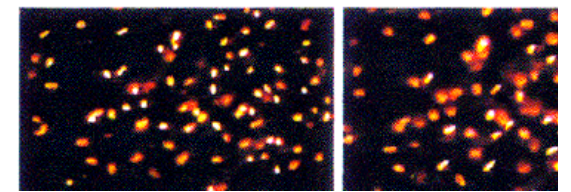
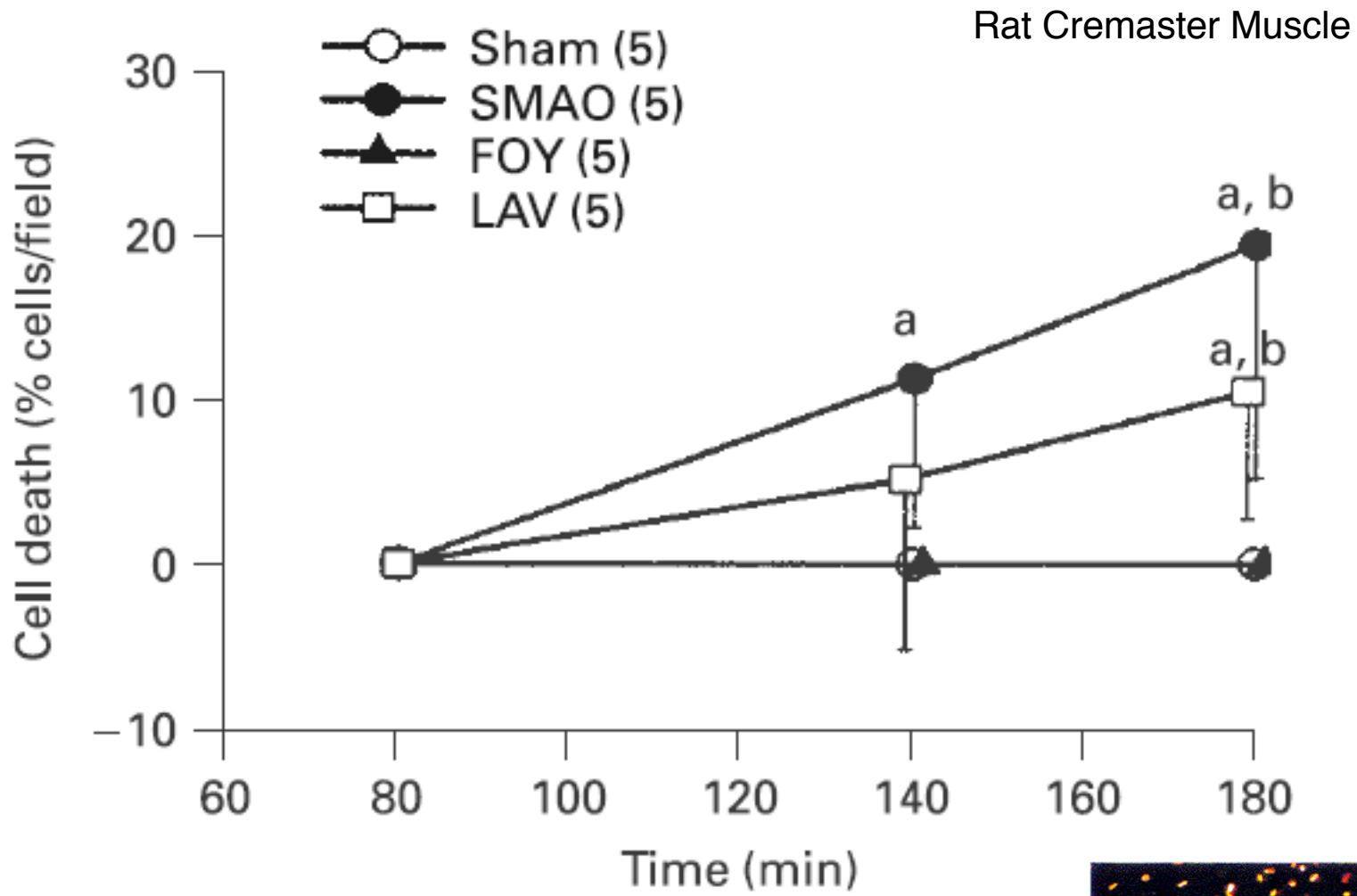
Leukocyte Infiltration



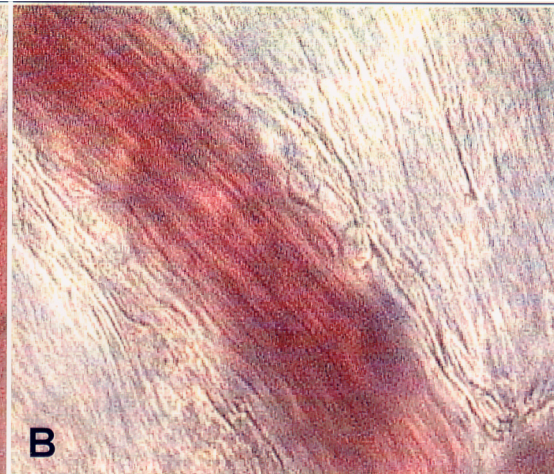
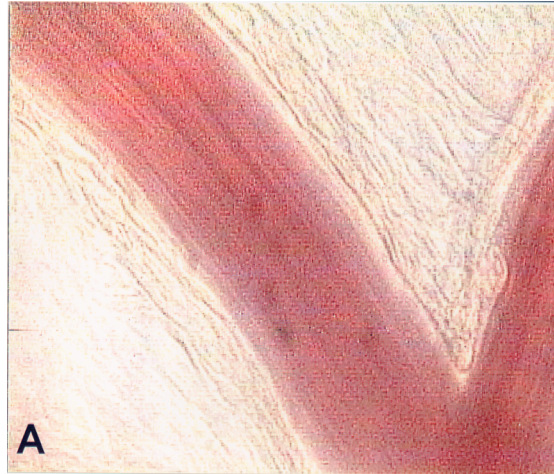
Acute Respiratory Distress Syndrome



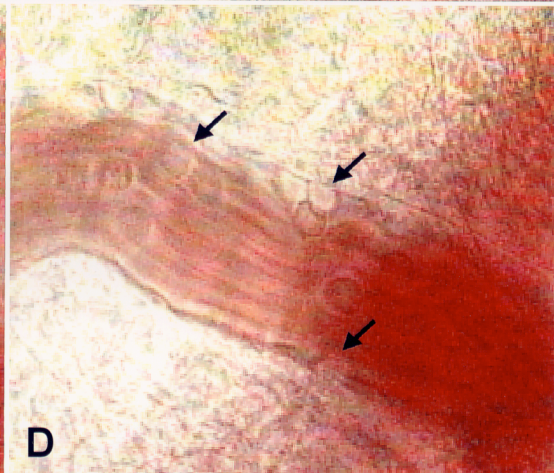
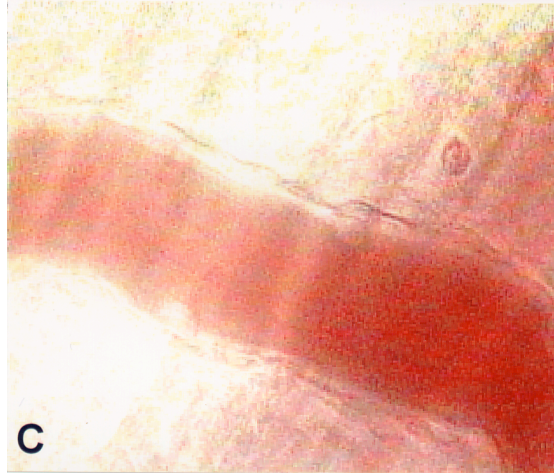
Intestinal Enzyme Blockade Prevents Cell Death in the Peripheral Microcirculation



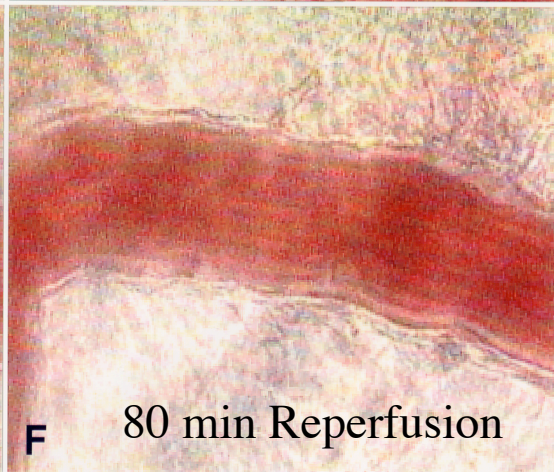
Sham



Intestinal Lavage
with Buffer



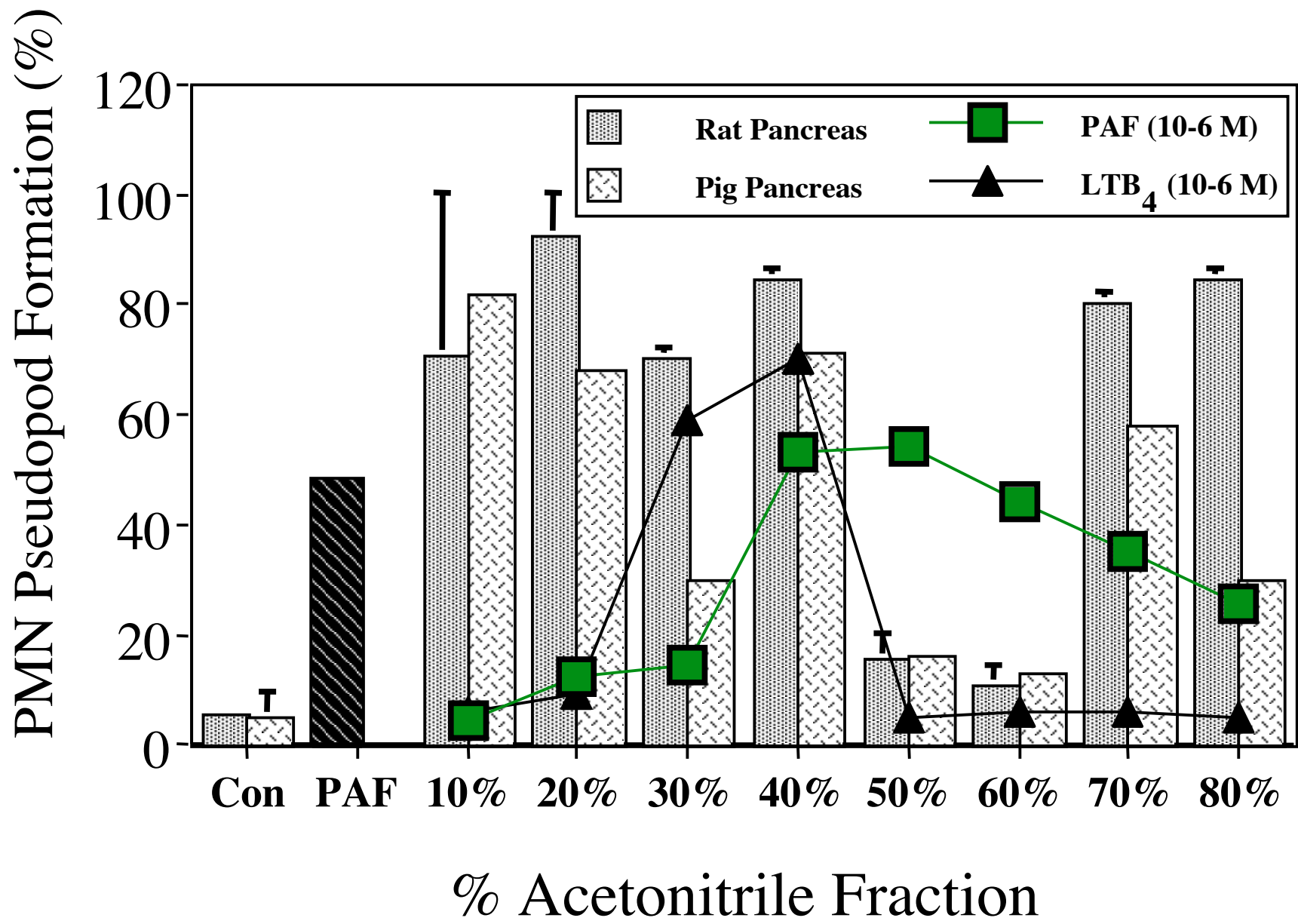
Intestinal Lavage
with FOY



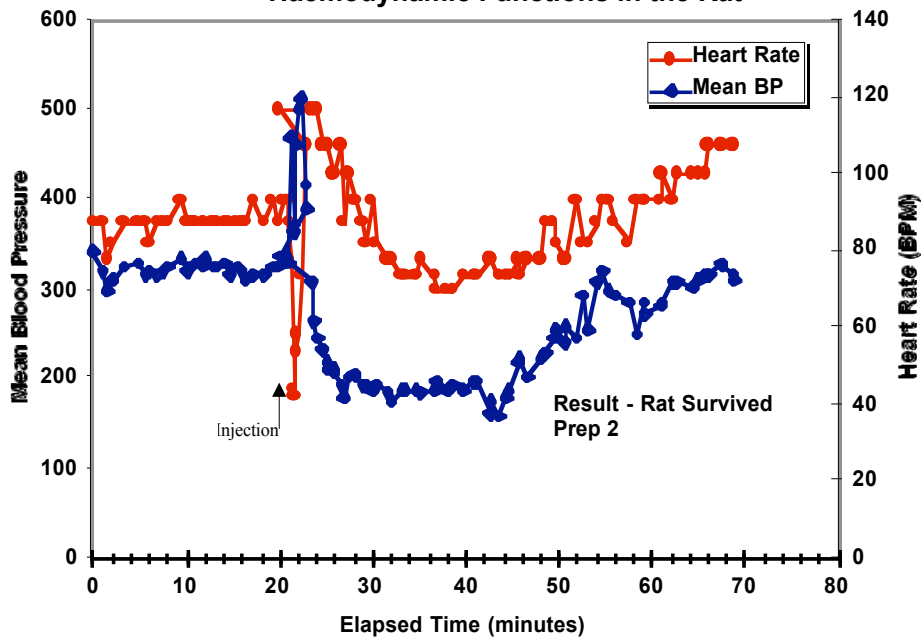
80 min Ischemia

80 min Reperfusion

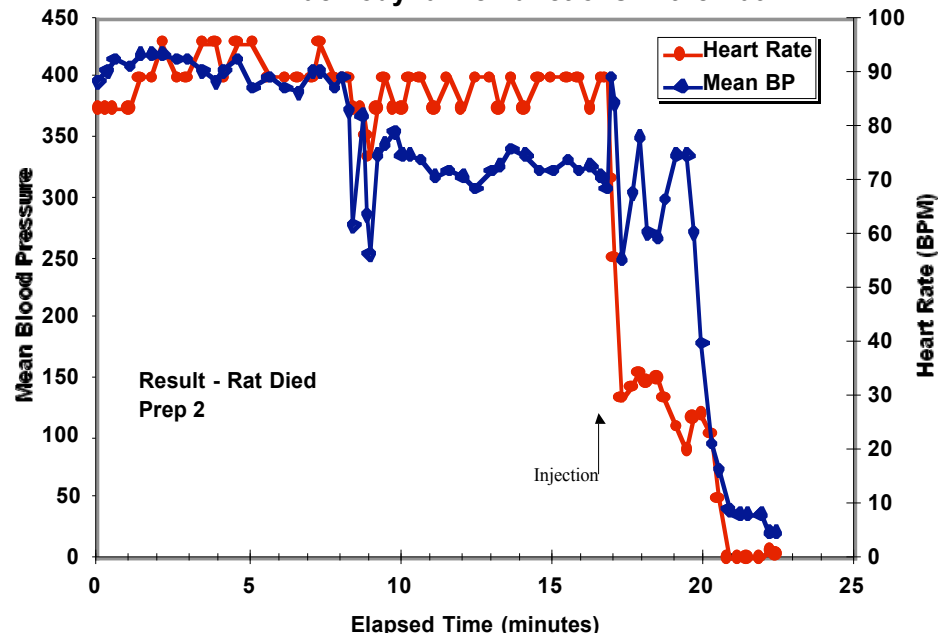
What are the inflammatory mediators ?



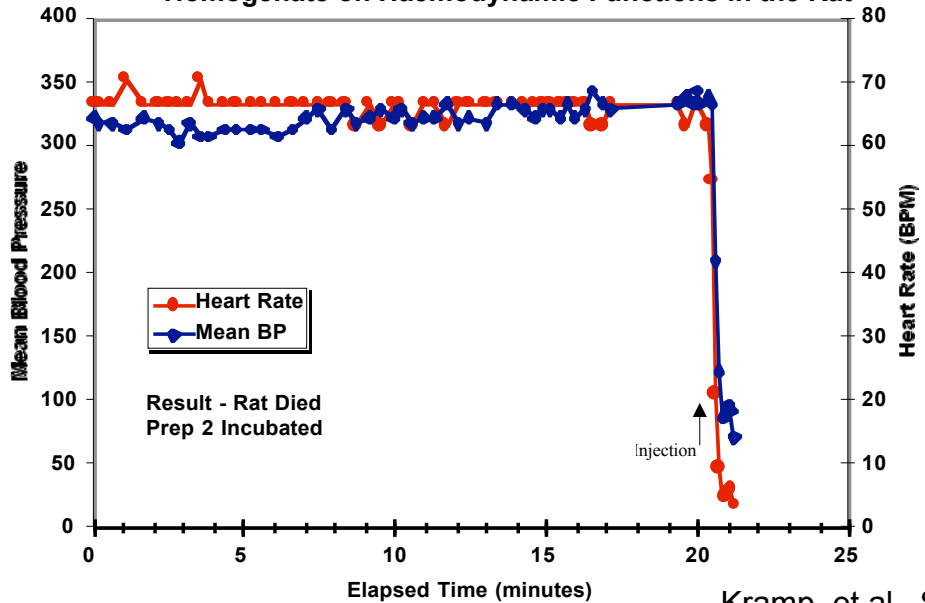
Effect of Non-Incubated Pancreatic Homogenate On Haemodynamic Functions in the Rat



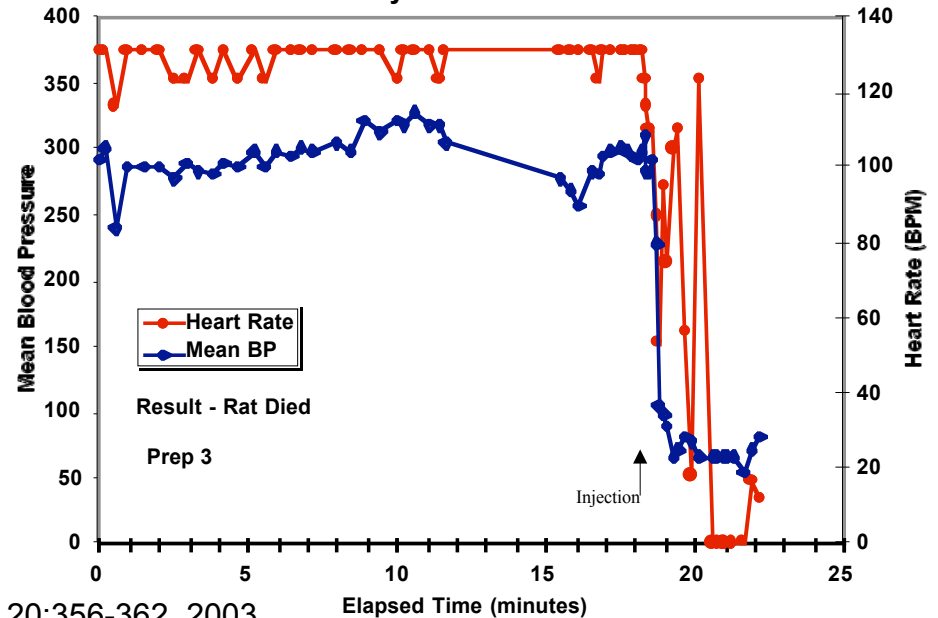
Effect of Incubated Pancreatic Homogenate On Haemodynamic Functions in the Rat



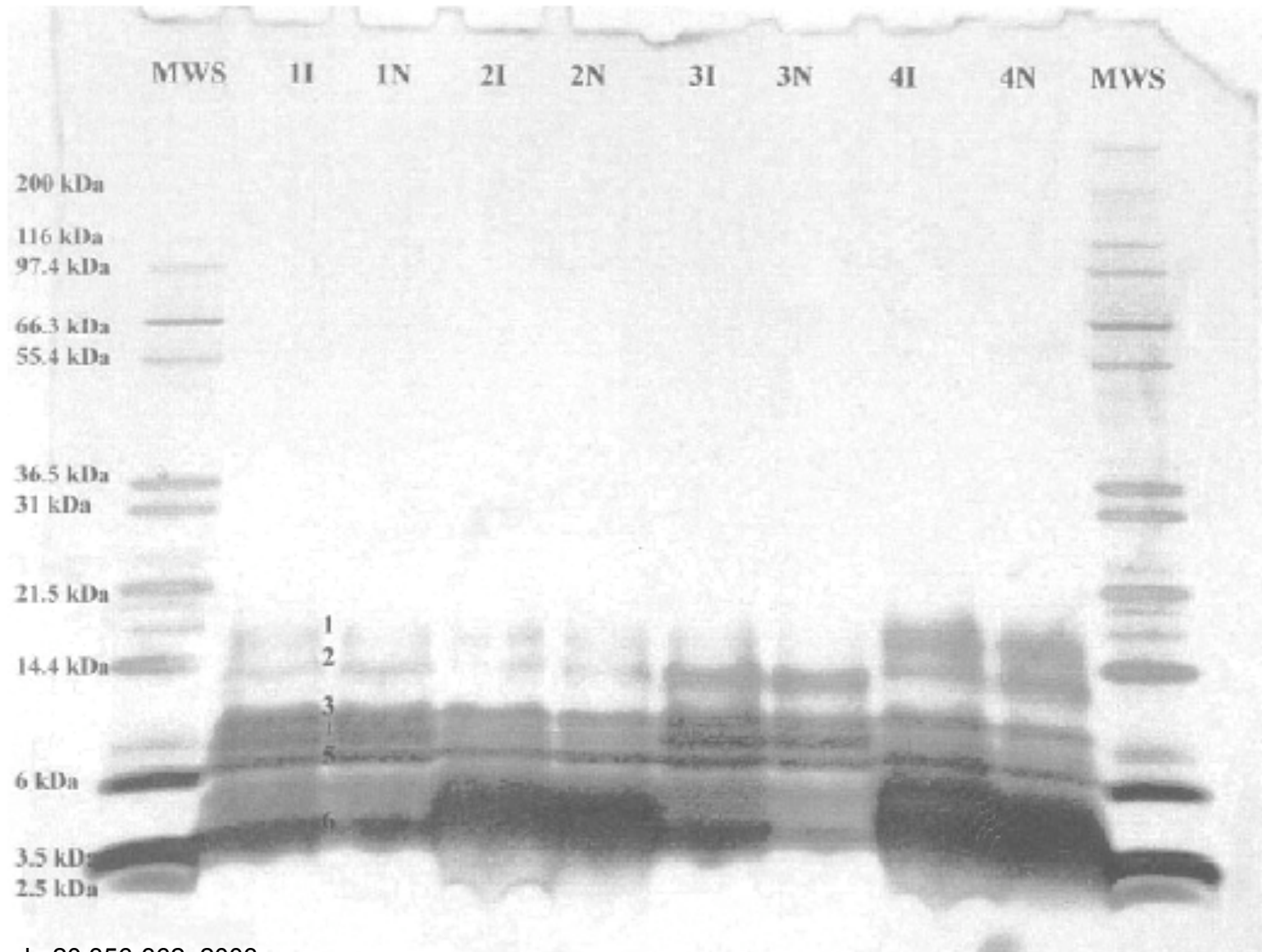
Effect of Aqueous Extract of Incubated Pancreatic Homogenate on Haemodynamic Functions in the Rat



Effect of Lipid Extract of Pancreatic Homogenate On Haemodynamic Functions in the Rat

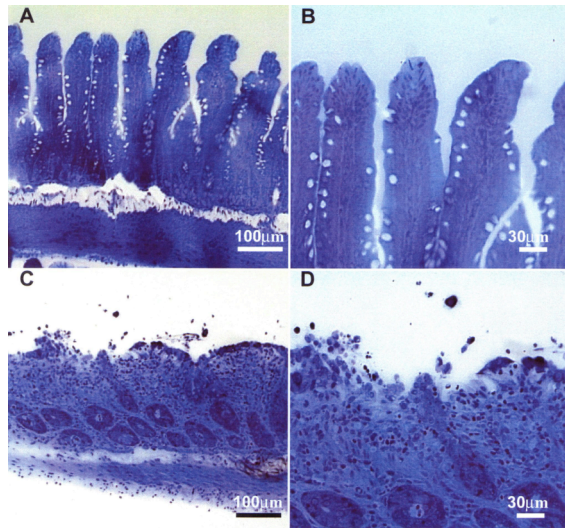


Electrophoresis pattern of aqueous fraction of incubated (I) and non-incubated (N) pancreatic homogenates

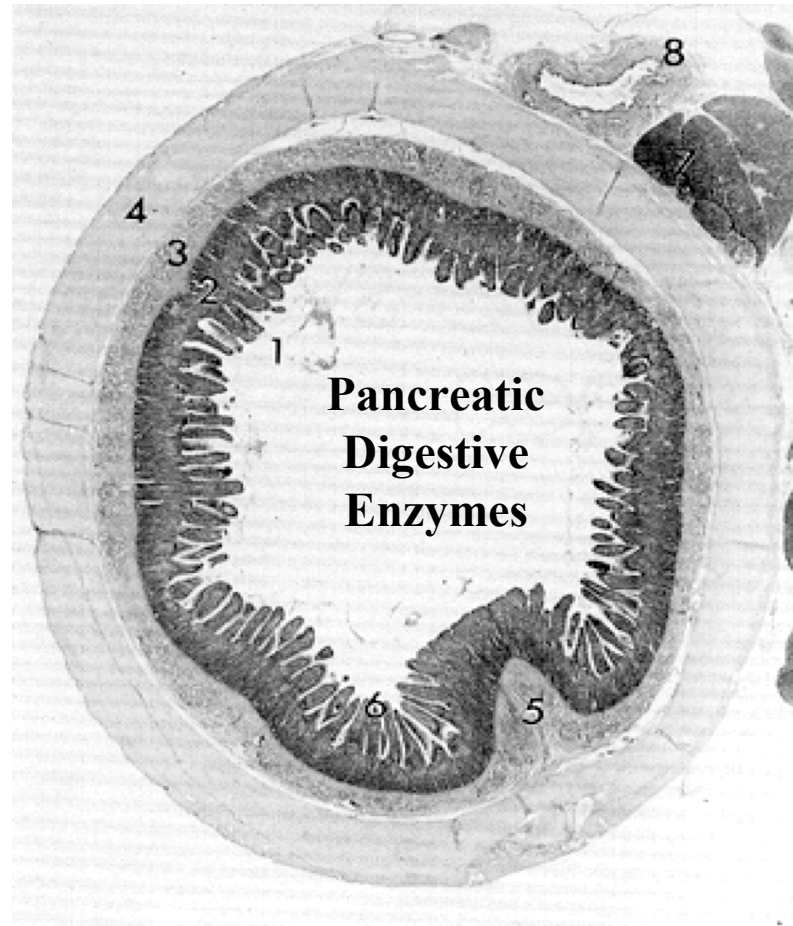


A breach of the intestinal mucosal barrier causes

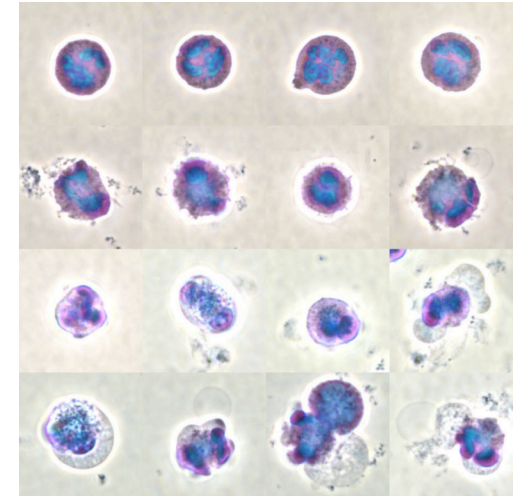
Destruction of the Mucosal Epithelial Barrier



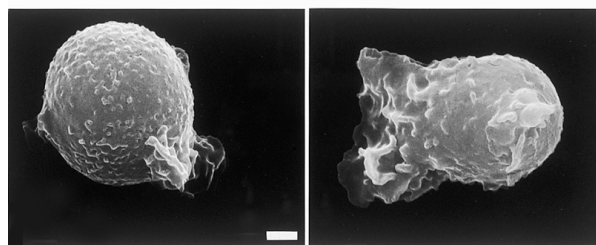
Escape of Digestive Enzymes into the Wall of the Intestine and Auto-digestion



Cardiovascular Cytotoxicity



Cell Activation



Swelling of the Lung & ARI

