

# 20.109 Module 2

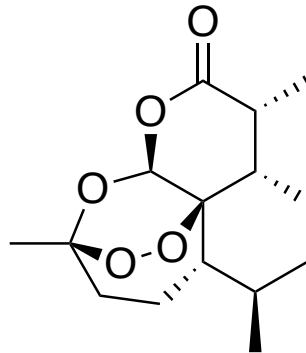
## Lecture #1: **Introduction to Drug Discovery**

Instructor: Prof. Jacquin C. Niles

Department of Biological Engineering

Email: [jcniles@mit.edu](mailto:jcniles@mit.edu)

13 October 2022



# What is a drug?

- A substance recognized by an official pharmacopoeia or formulary.
- A substance intended for use in the diagnosis, cure, mitigation, treatment, or prevention of disease.
- A substance (other than food) intended to affect the structure or any function of the body.
- A substance intended for use as a component of a medicine but not a device or a component, part or accessory of a device.
- Biological products are included within this definition and are generally covered by the same laws and regulations, but differences exist regarding their manufacturing processes (chemical process versus biological process.)

# How were drugs previously discovered?

- Extracts from natural products (usually plants)



Poppy  
ca. 1500 BC  
“pain relief; sedation”  
Opiates



Willow tree extract  
ca. 3000-1500 BC  
“pain reliever”  
Aspirin



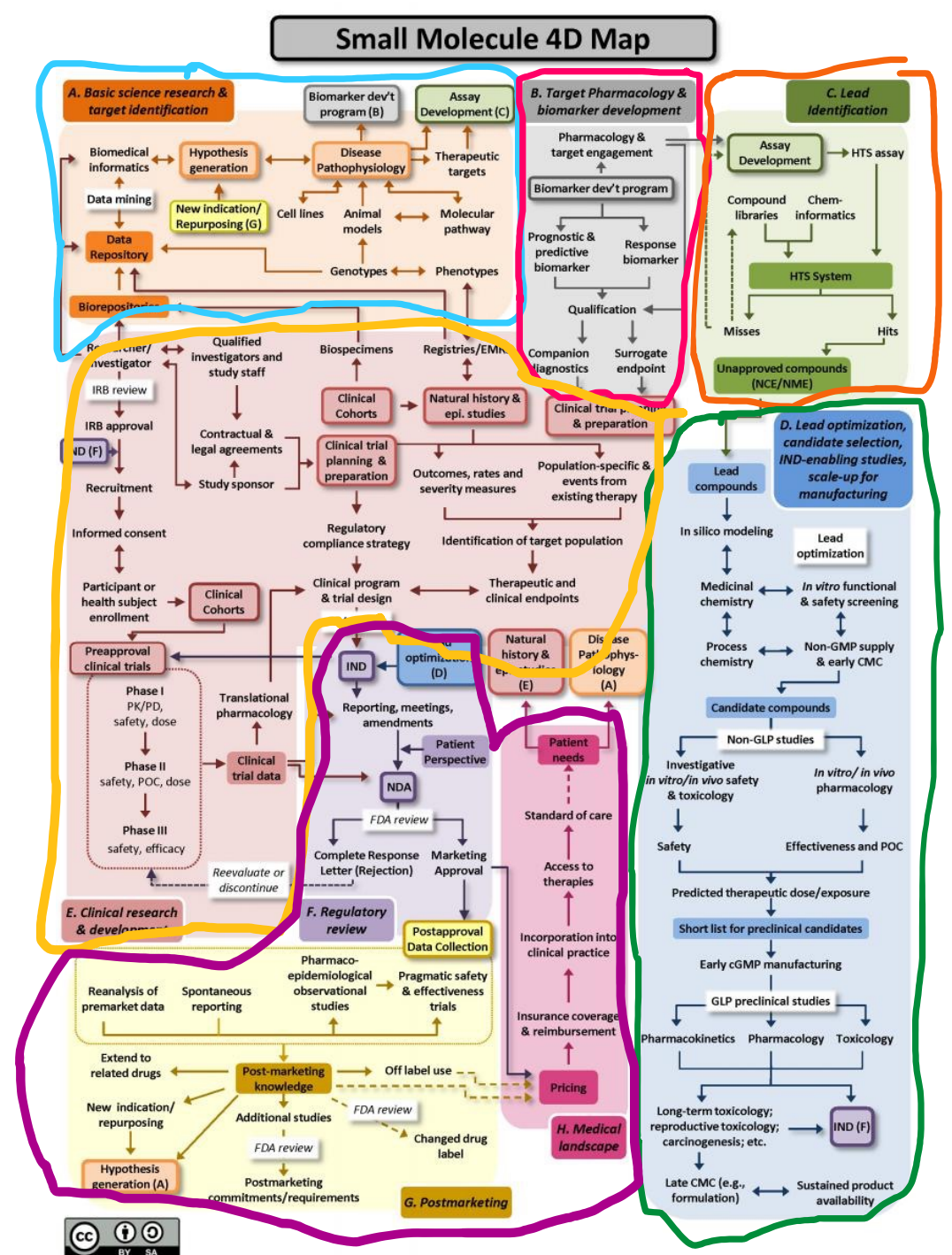
Artemisia annua L.  
ca. 168 BC  
“fever”  
Artemisinin

## How are drugs discovered now?

- A. Basic science research and target identification
- B. Target pharmacology and biomarker development
- C. Lead identification
- D. Lead optimization and candidate selection
  - Improving pharmacologic, metabolic, safety profiles of lead toward use in humans
- E. Clinical research & development
  - Clinical trials to establish efficacy and safety
- F. Regulatory review (FDA approval)
- G. Post-marketing
  - Surveillance (adverse effects)
  - Repurposing
  - Off-label use
- H. Medical landscape

## References:

- 1) Wagner et al; Nature Reviews Drug Discovery; 2018;
- 2) <https://ncats.nih.gov/translation/maps>
- 3) 4D Map (interactive): <https://4dmap.ncats.nih.gov/#/>

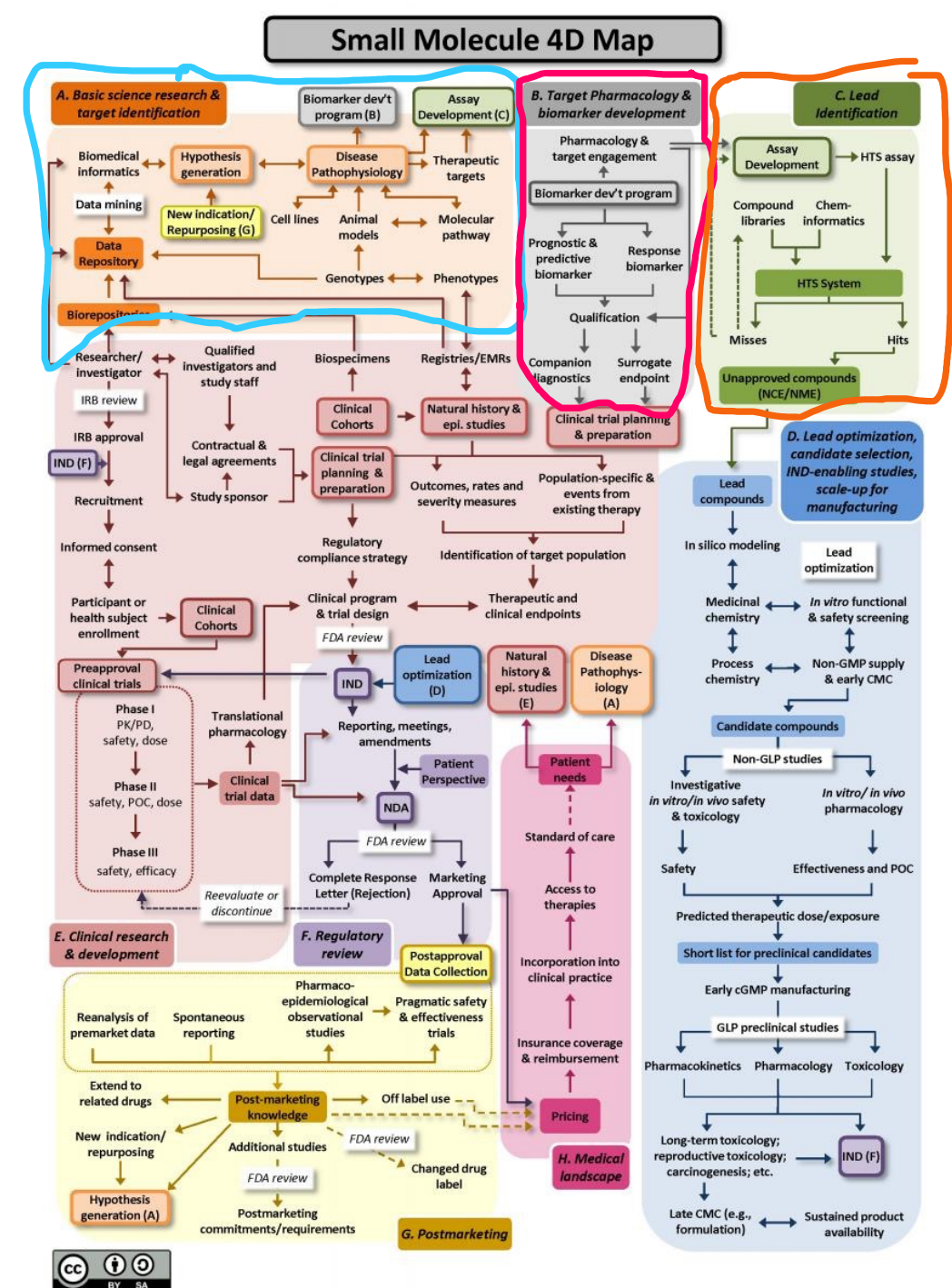




- A. Basic science research and target identification**
- B. Target pharmacology and biomarker development**
- C. Lead identification**
- D. Lead optimization and candidate selection
  - Improving pharmacologic, metabolic, safety profiles of lead toward use in humans
- E. Clinical research & development
  - Clinical trials to establish efficacy and safety
- F. Regulatory review (FDA approval)
- G. Post-marketing
  - Surveillance (adverse effects)
  - Repurposing
  - Off-label use
- H. Medical landscape

- A. Basic science research and target identification**
- B. Target pharmacology and biomarker development**
- C. Lead identification**
- D. Lead optimization and candidate selection
  - Improving pharmacologic, metabolic, safety profiles of lead toward use in humans
- E. Clinical research & development
  - Clinical trials to establish efficacy and safety
- F. Regulatory review (FDA approval)
- G. Post-marketing
  - Surveillance (adverse effects)
  - Repurposing
  - Off-label use
- H. Medical landscape

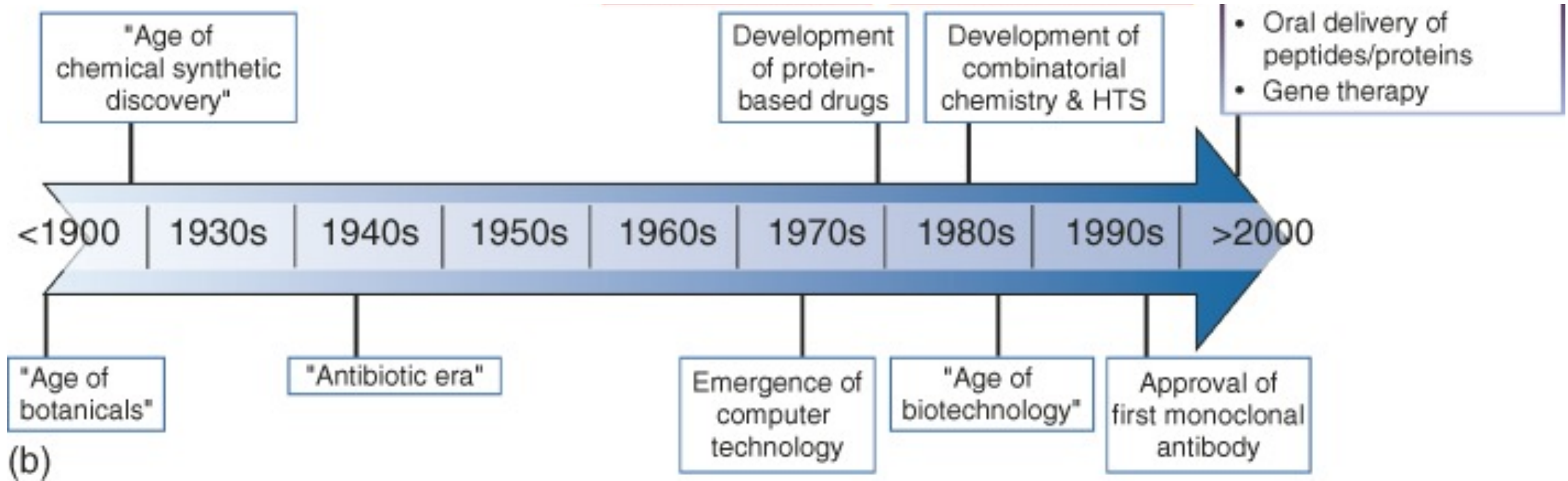
- 1) Wagner et al; Nature Reviews Drug Discovery; 2018;
- 2) <https://ncats.nih.gov/translation/maps>
- 3) 4D Map (interactive): <https://4dmap.ncats.nih.gov/#/>



# Contrasting old with modern framework for drug discovery and development

- Intentional and broad search for therapeutic agents
- Engages fundamental understanding of disease biology and mechanism
- Highly multidisciplinary
  - biologists, chemists, engineers, bioinformatics, clinicians, business, legal, ...
- High burden-of-proof to establish safety and efficacy
  
- Business model:
  - Incentivized process (profits) for innovating therapeutic solutions to diverse diseases impacting health
  - Potential skewing of disease areas preferentially prioritized for investment in drug discovery activities

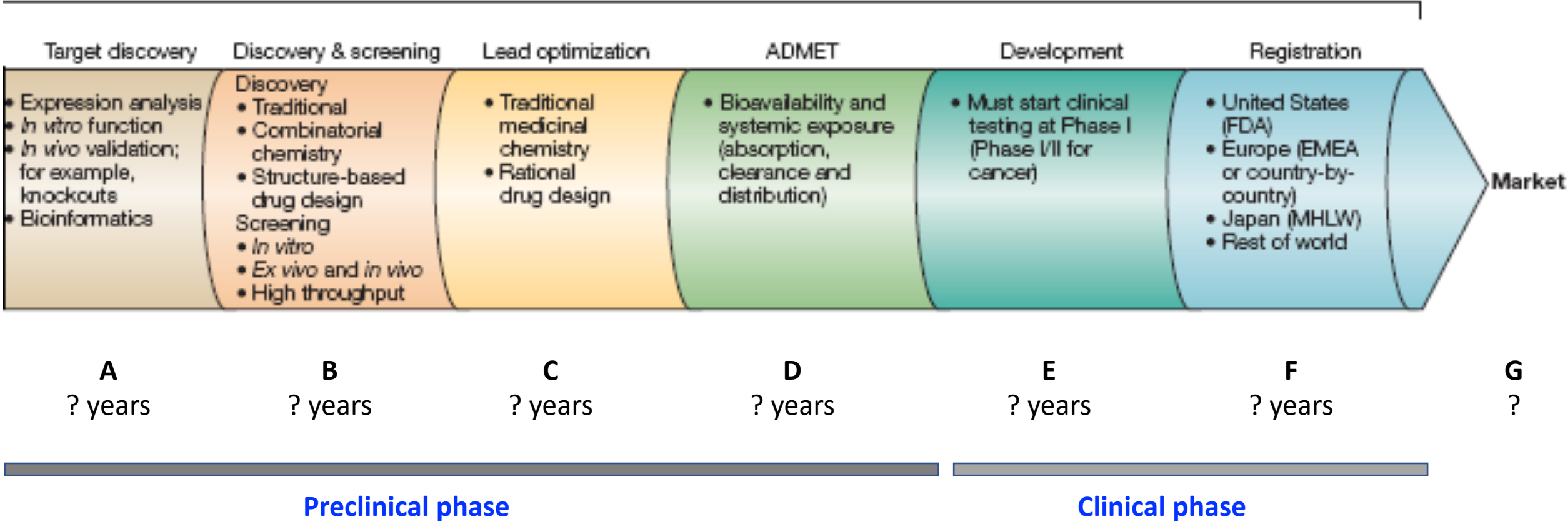
# Progression in the overall process of drug discovery and development



# Timeline for new drug discovery process

Question:  
What's the average duration of the various drug discovery phases?

*De novo* drug discovery and development  
• ? year process

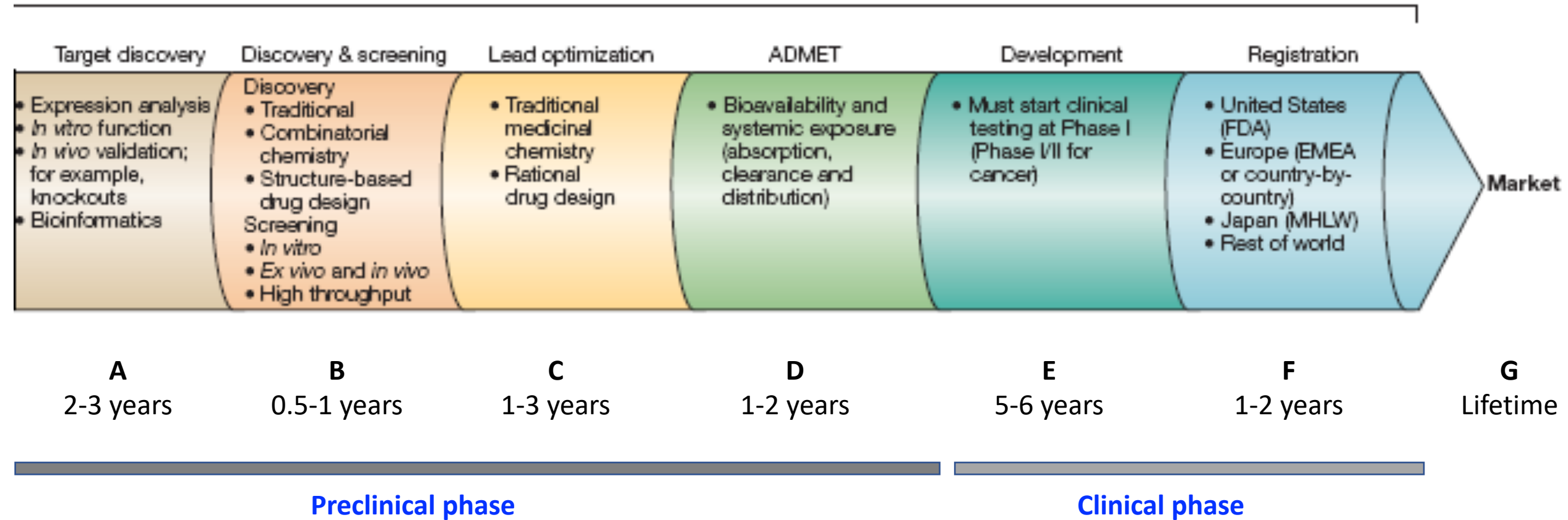




# Timeline for new drug discovery process

*De novo* drug discovery and development

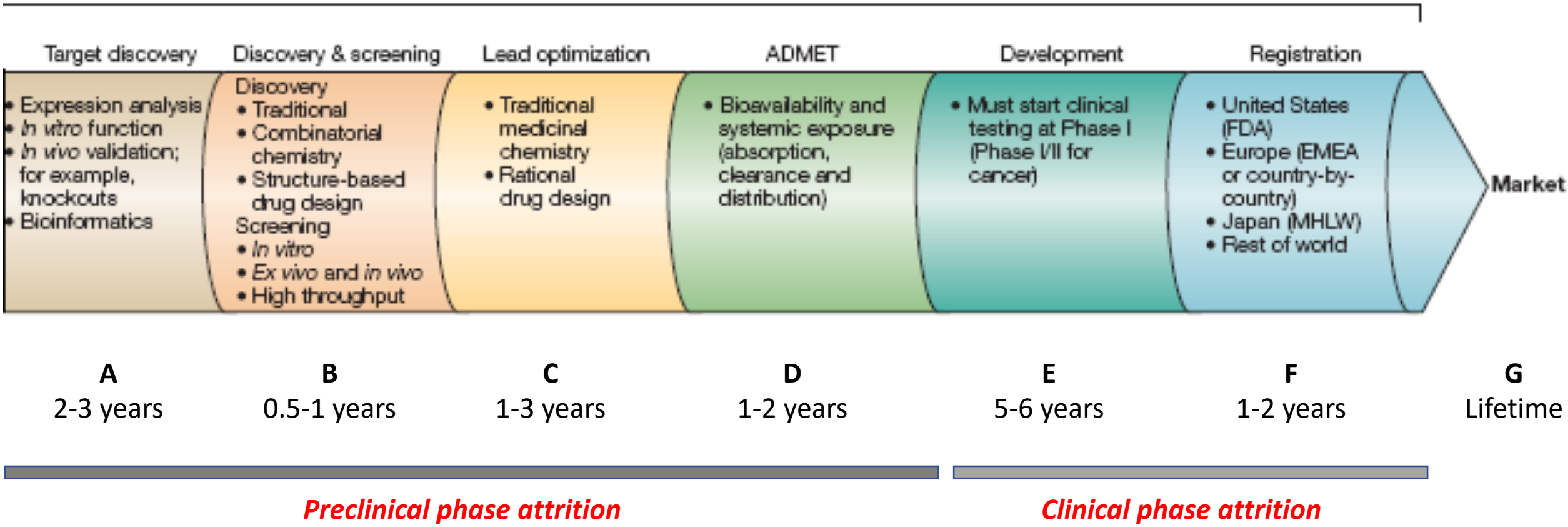
- **10-17 year process!**



# Probability of successfully developing a new drug that comes to market

*De novo* drug discovery and development

- **10-17 year process!**



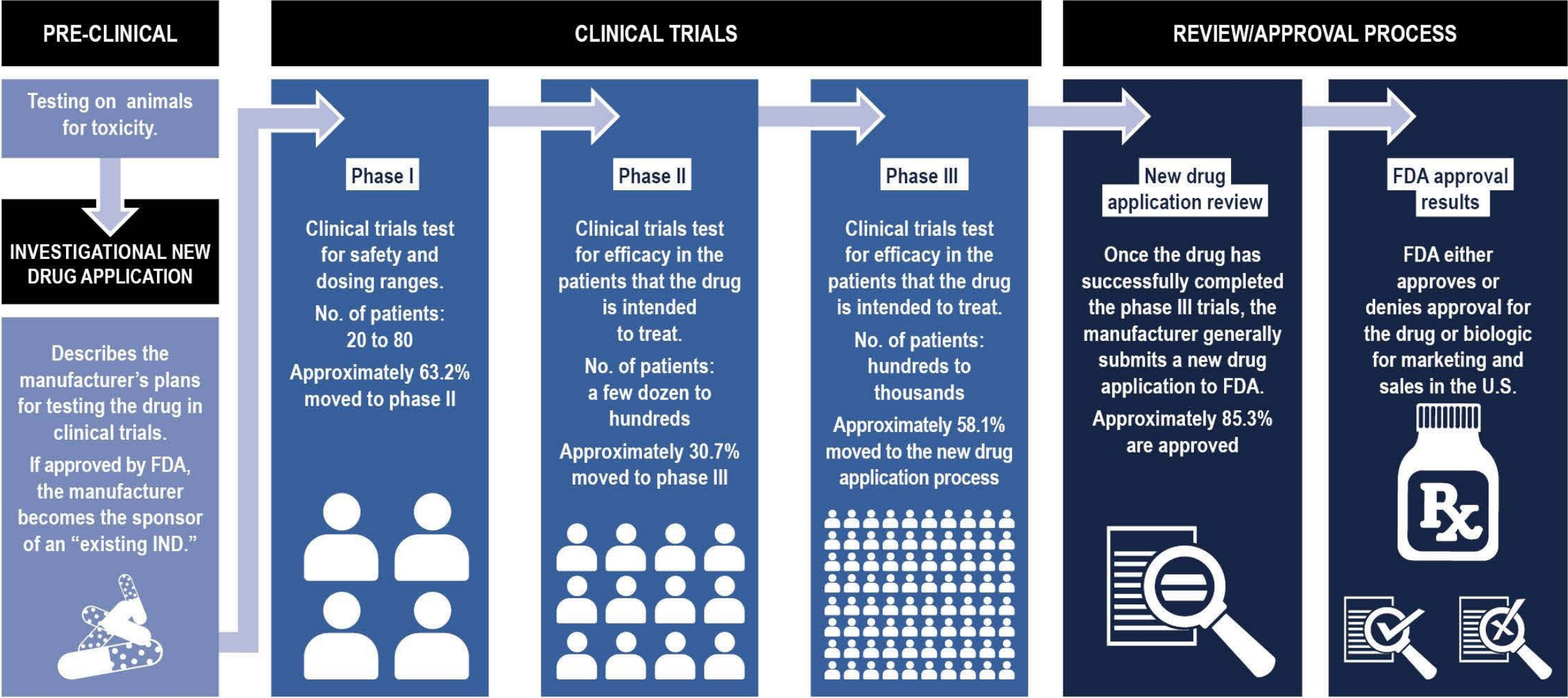
## References:

- [illegible]



# Clinical phase:

## Brief overview of clinical research and development



Source: GAO analysis of FDA data and a 2016 collaborative study by Biotechnology Innovation Organization, Biomedtracker, and Amplion.<sup>a</sup> | GAO-17-564

# Attrition along the drug discovery pipeline

Therapeutic group	Phase 1 to Phase 2		Phase 2 to Phase 3			Phase 3 to Approval		Overall
	Total paths	POS <sub>1,2</sub> , % (SE, %)	Total paths	POS <sub>2,3</sub> , % (SE, %)	POS <sub>2,APP</sub> , % (SE, %)	Total paths	POS <sub>3,APP</sub> , % (SE, %)	POS, % (SE, %)
Oncology	17 368	57.6 (0.4)	6533	32.7 (0.6)	6.7 (0.3)	1236	35.5 (1.4)	3.4 (0.2)
Metabolic/ Endocrinology	3589	76.2 (0.7)	2357	59.7 (1.0)	24.1 (0.9)	1101	51.6 (1.5)	19.6 (0.7)
Cardiovascular	2810	73.3 (0.8)	1858	65.7 (1.1)	32.3 (1.1)	964	62.2 (1.6)	25.5 (0.9)
CNS	4924	73.2 (0.6)	3037	51.9 (0.9)	19.5 (0.7)	1156	51.1 (1.5)	15.0 (0.6)
Autoimmune/ Inflammation	5086	69.8 (0.6)	2910	45.7 (0.9)	21.2 (0.8)	969	63.7 (1.5)	15.1 (0.6)
Genitourinary	757	68.7 (1.7)	475	57.1 (2.3)	29.7 (2.1)	212	66.5 (3.2)	21.6 (1.6)
Infectious disease	3963	70.1 (0.7)	2314	58.3 (1.0)	35.1 (1.0)	1078	75.3 (1.3)	25.2 (0.8)
Ophthalmology	674	87.1 (1.3)	461	60.7 (2.3)	33.6 (2.2)	207	74.9 (3.0)	32.6 (2.2)
Vaccines (Infectious Disease)	1869	76.8 (1.0)	1235	58.2 (1.4)	42.1 (1.4)	609	85.4 (1.4)	33.4 (1.2)
Overall	41 040	66.4 (0.2)	21 180	48.6 (0.3)	21.0 (0.3)	7532	59.0 (0.6)	13.8 (0.2)
All without oncology	23 672	73.0 (0.3)	14 647	55.7 (0.4)	27.3 (0.4)	6296	63.6 (0.6)	20.9 (0.3)

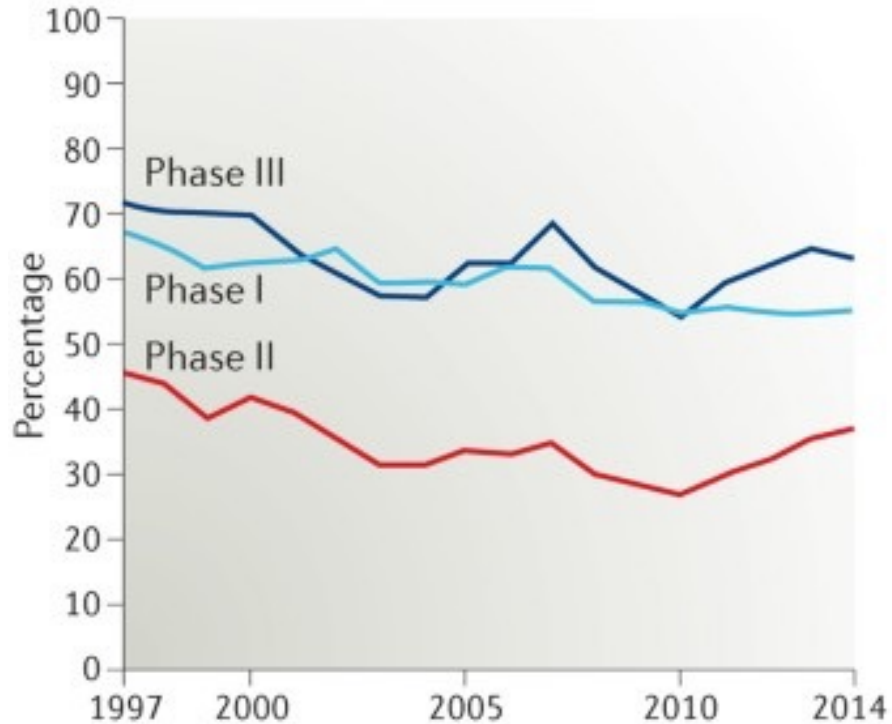
- 185,994 unique trials of over 21,143 compounds from Jan 2000 through Oct 2015
  - 13.8% of drug programs make it from Phase I to approval
    - 20.9% if cancer excluded
  - (Higher than the oft-touted estimates of 5% or 10%)
- Probability of success varies by disease area
  - Why might this be?



# Attrition along the drug discovery pipeline

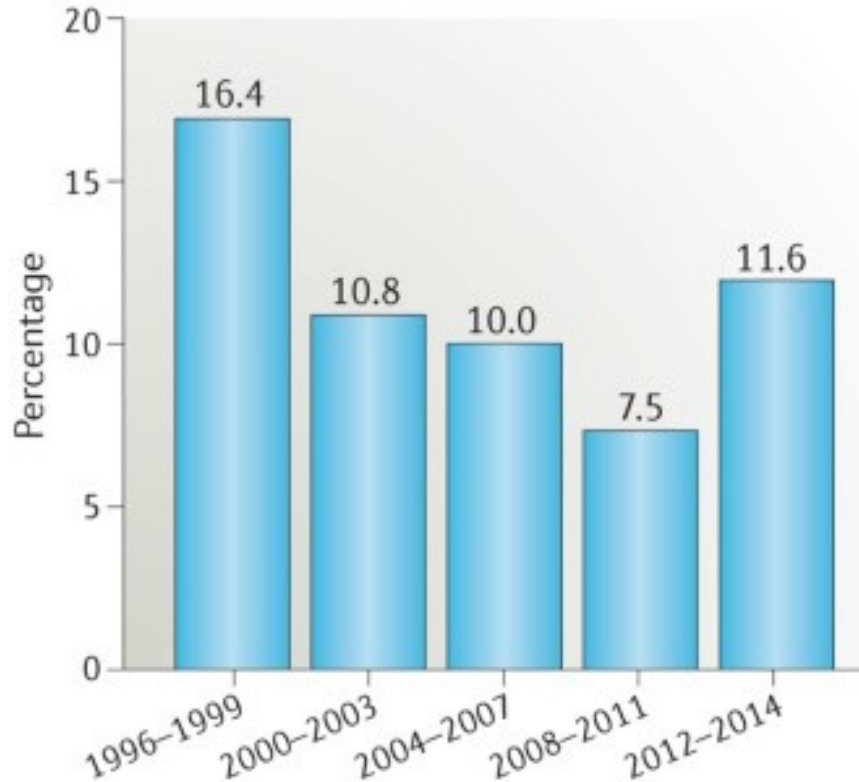
## a Success rates by phase

Percentage likelihood of moving to next phase, 3-year rolling average\*



## b Cumulative success rate Phase I to launch

Percentage likelihood of moving from Phase I to launch

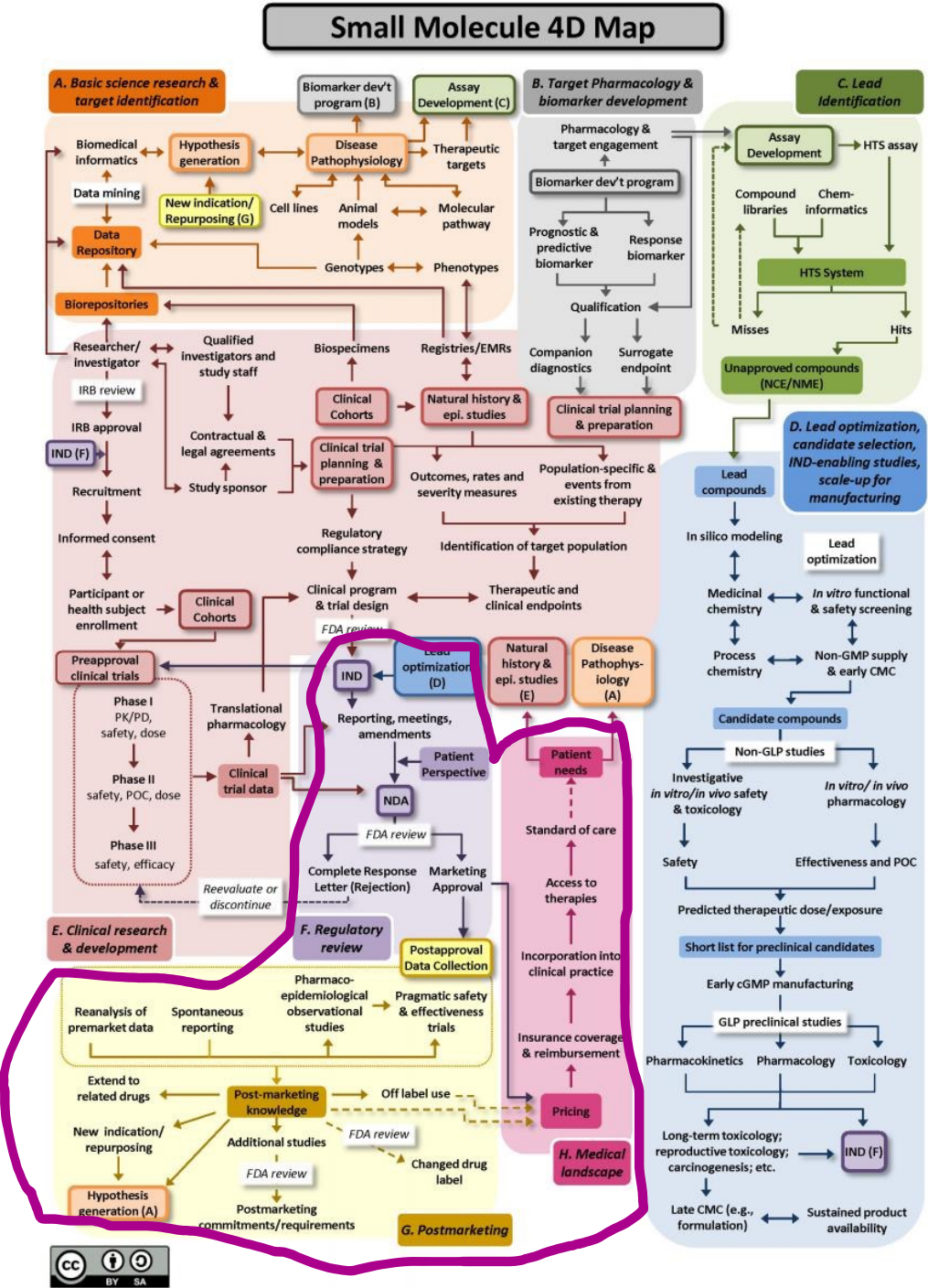


- Phase II success rates lowest
  - Why might this be so?
- Overall success rates steadily declining 1996-2011, but improved since 2012

Nature Reviews | Drug Discovery

# Regulation of drug approval in the U.S.

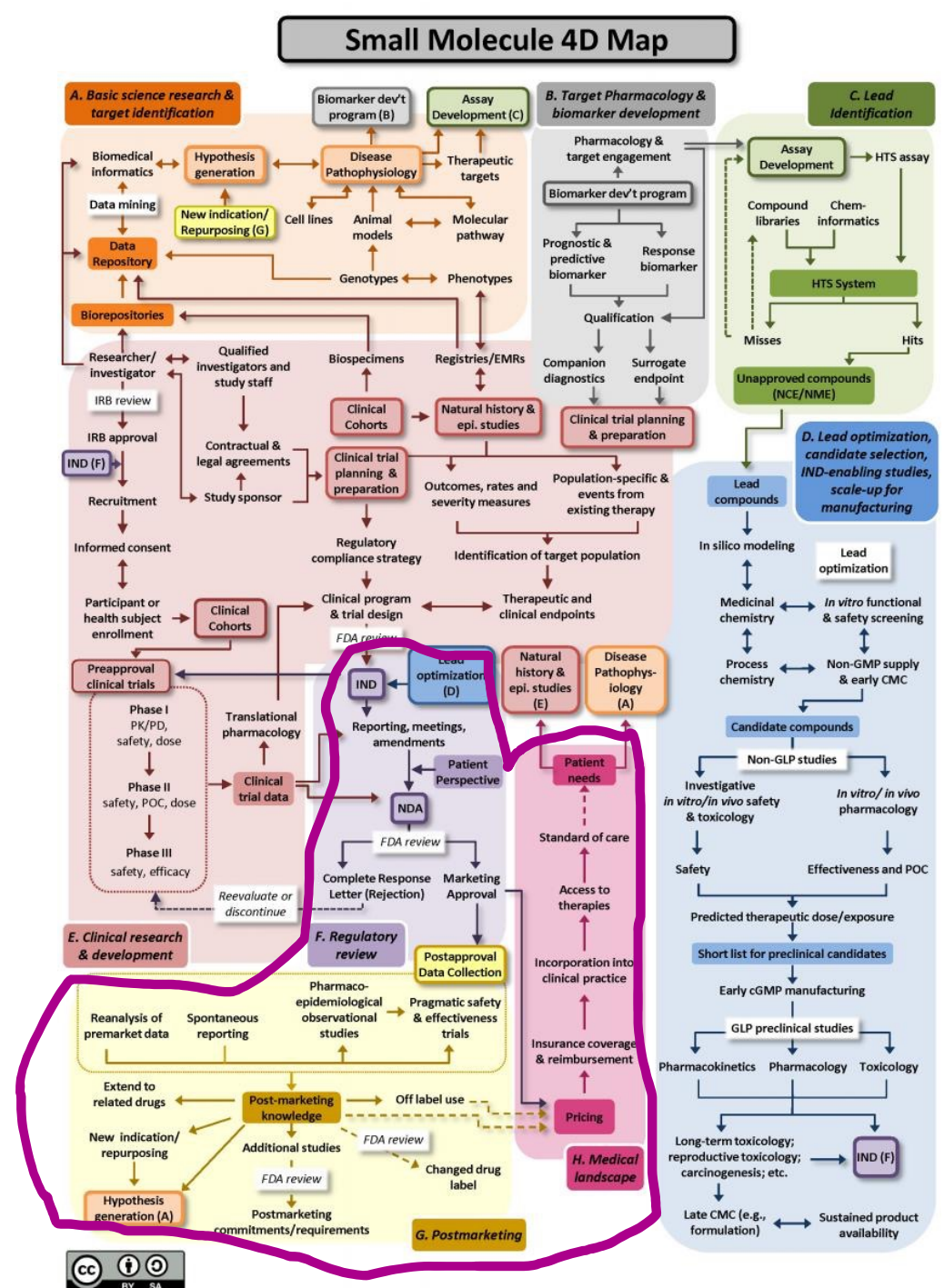
- A. Basic science research and target identification
- B. Target pharmacology and biomarker development
- C. Lead identification
- D. Lead optimization and candidate selection
  - Improving pharmacologic, metabolic, safety profiles of lead toward use in humans
- E. Clinical research & development
  - Clinical trials to establish efficacy and safety
- F. Regulatory review (FDA approval)**
- G. Post-marketing
  - Surveillance (adverse effects)
  - Repurposing
  - Off-label use
- H. Medical landscape



References:

# Regulation of drug approval in the U.S.

- What needs to be regulated?
- How is this regulation achieved?
  - FDA
  - United States Pharmacopeia-National Formulary (USP-NF)
- What are some implications of this regulation for the drug discovery and marketing process?

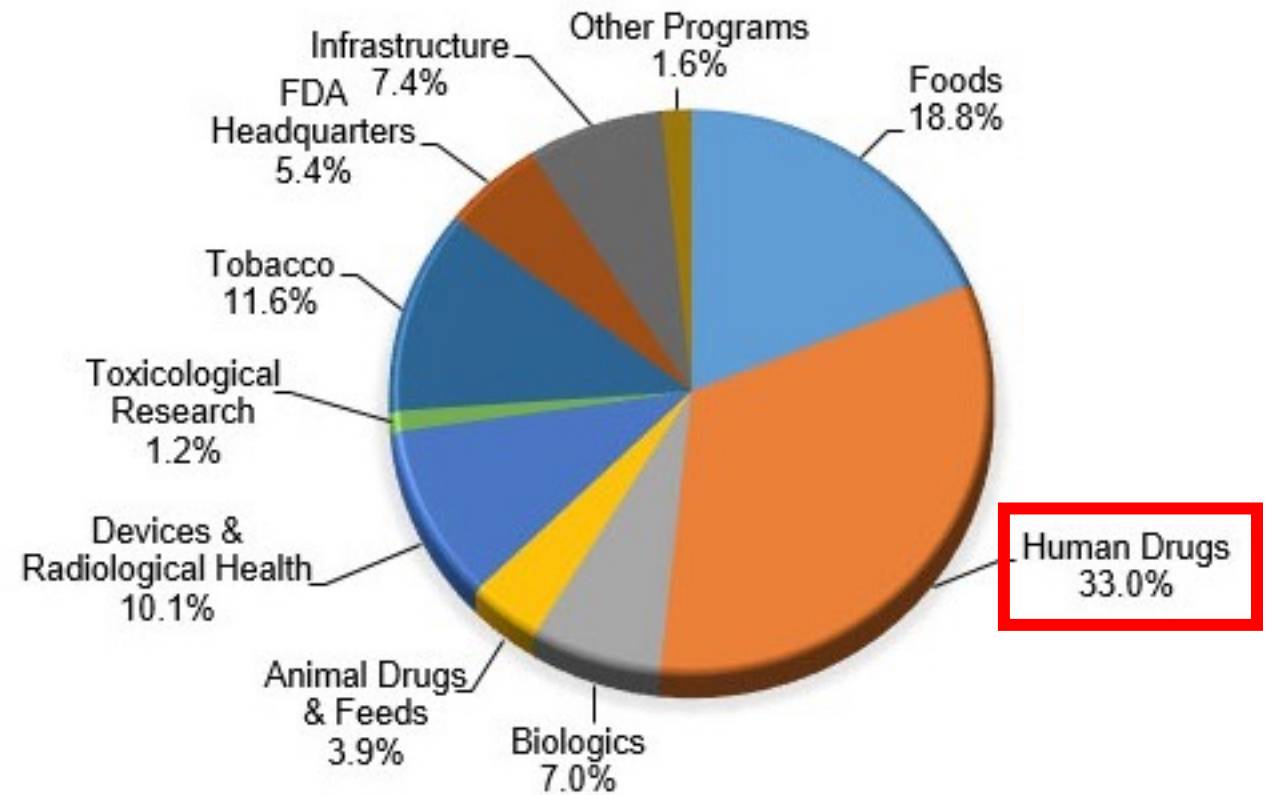




# Food and Drug Association (FDA)

- FDA is an agency within the U.S. Department of Health and Human Services
- Protects public health by assuring the safety, effectiveness, and security of human and veterinary drugs, vaccines and other biological products for human use, and medical devices.
- Over **20,000 FDA-regulated** prescription drug products approved for marketing
  - 1,600 FDA-approved animal drug products
  - 400 FDA-licensed biologics products
- FDA budget sources
  - ~ 55 percent (\$3.1 billion) from federal government
  - ~45 percent (\$2.6 billion) from industry fees.

**FY 2019 FDA Budget by Program (Total = \$5.7 billion)**

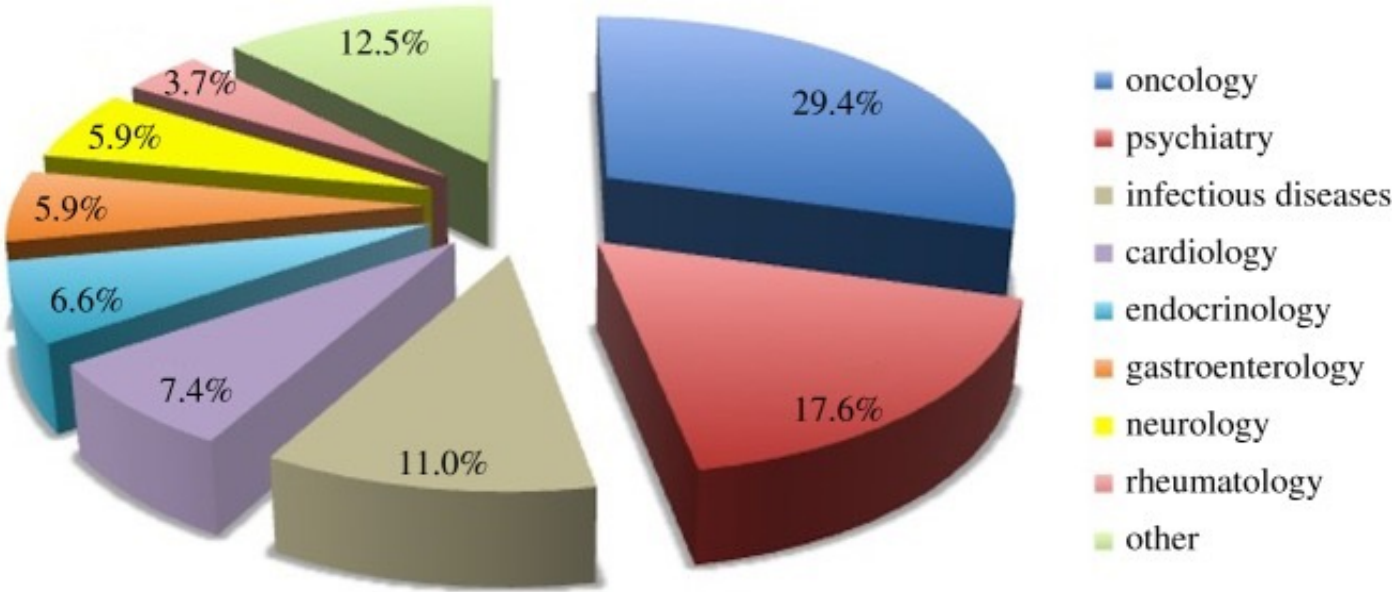


Notes: Infrastructure includes rent, rent related activities, FDA buildings and facilities, and White Oak consolidation. Other programs includes Export Certification and Color Certification Fund.

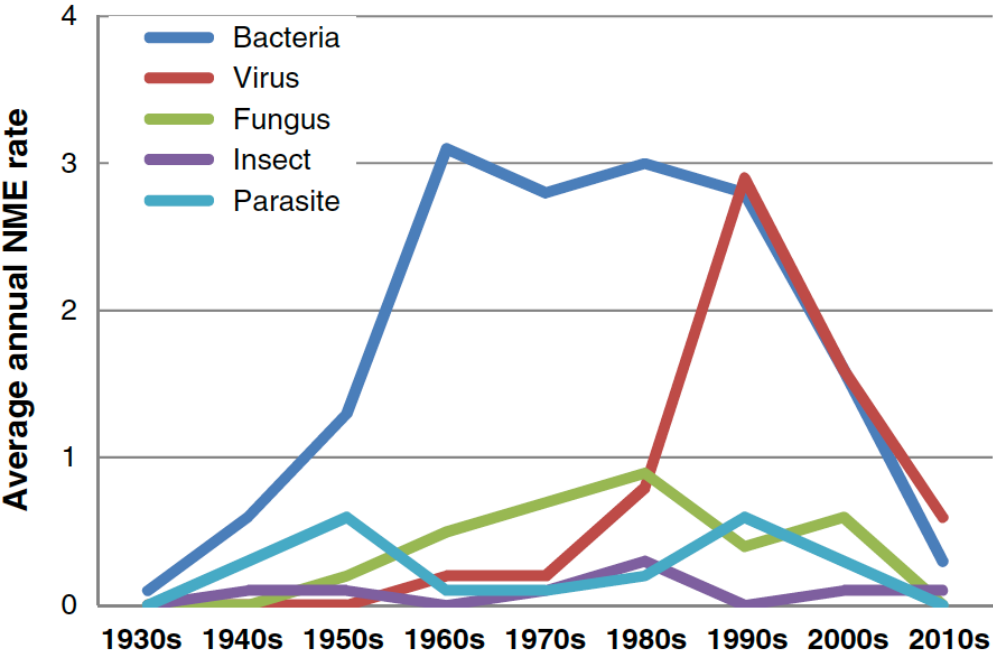
Reference:

1) FDA at a Glance: <https://www.fda.gov/media/131874/download>

# FDA approved drugs and distribution across disease indication areas



Breakdown of new infectious disease drugs

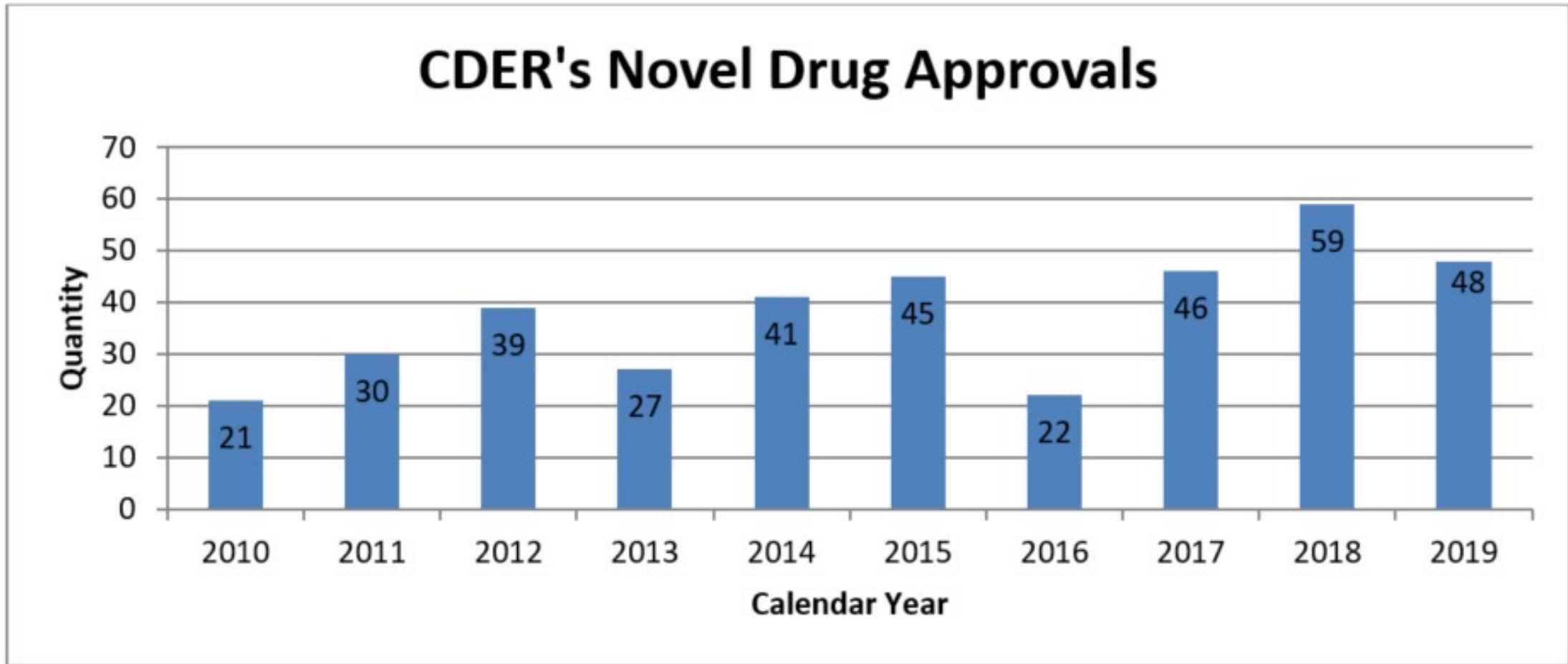


Antibacterial: 55%  
Antiviral: 22%  
Antifungal: 12%  
Antiparasitic: 8%  
Insecticidal: 3%

References:  
1) FDA at a Glancet: <https://www.fda.gov/media/131874/download>  
2) Kinch et al; Drug Discovery Today; 2012



# Annual new FDA drug approvals



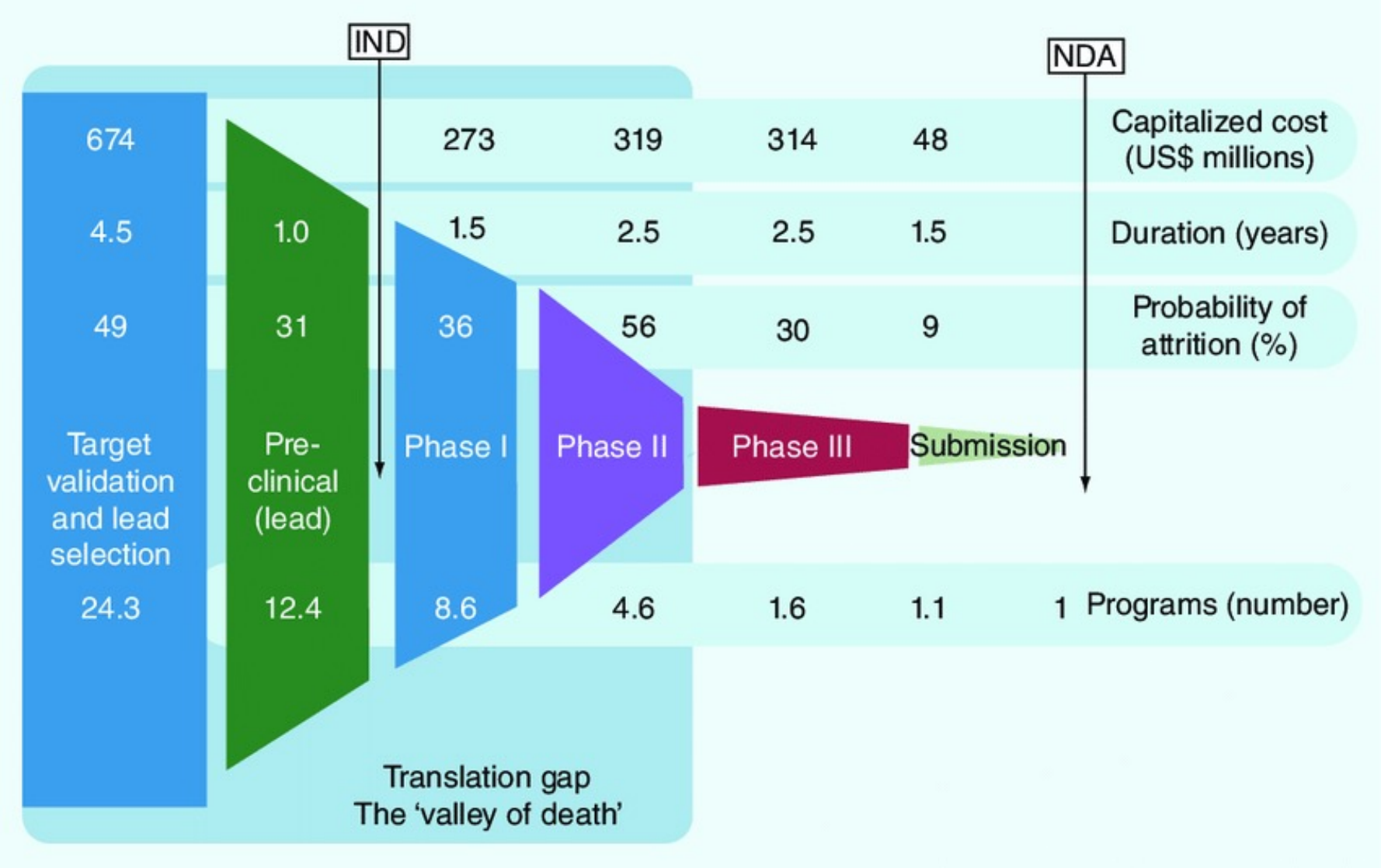
- In 2019, 20/48 FDA approved drugs were “first in class”
  - Possess distinct mechanisms of actions from previously approved drugs

# United States Pharmacopeia – National Formulary (USP-NF)



References:  
<https://qualitymatters.usp.org/pharma-co-what>

# New drug discovery is expensive ... with no guarantee of success!

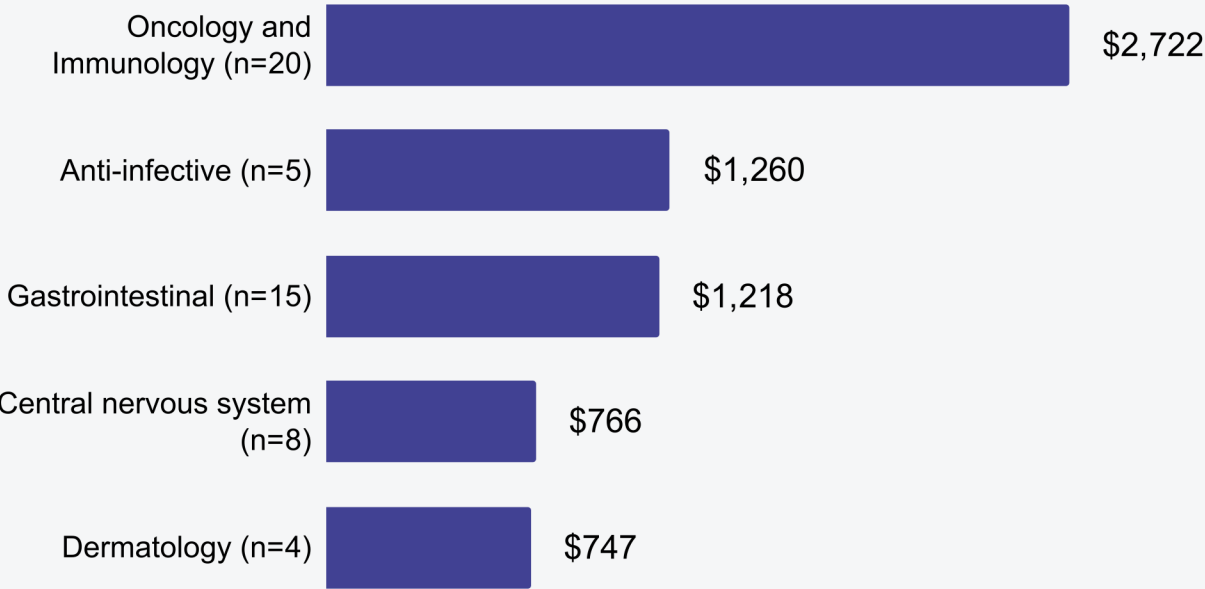


Between 2009 –2018, the median cost of developing a new drug was \$985 million, while the average total was \$1.3 billion!

# New drug discovery is expensive ... with no guarantee of success!

## R&D costs highest for cancer, immunology medicines

Estimated median expense on new drugs approved by U.S. FDA between 2009-2018, in millions of dollars



Cost of developing a new drug  
(2009 –2018 data):

Median: \$985 million  
Average: \$1.3 billion

Reference:  
Wouters et al; JAMA. 2020;323(9):844-853. doi:10.1001/jama.2020.1166

# Summary

- Drug discovery and development is a highly complex, multidisciplinary process
- The goal is to develop safe and effective medicines across a broad portfolio of health needs
- Stringent regulation and monitoring during and after new drug approval by federal and independent organizations are vital to ensuring safety, product authenticity and efficacy
- Both the preclinical and clinical phases of drug development are very costly AND success is not guaranteed (failure is the norm?)!

