

M1D5: Draft data slide for major assignment

- Comm Lab
- Paper discussion with Noreen
- Work on the draft of your data figure
 1. Format
 2. Refine/edit
 3. Write a Results and Interpretation section in bullet points

Notes for adjusting H2AX images for figures (adapted from Bevin's email)

- Open a H2AX image
- Go to FITC channel
- On main ImageJ Menu -> Image -> Adjust -> Brightness/Contrast
- Brightness all the way to the right
- “Apply”
- Zoom in on promising nuclei
- Adjust brightness and contrast to pull up foci

Notes for adjusting H2AX images for figures continued...

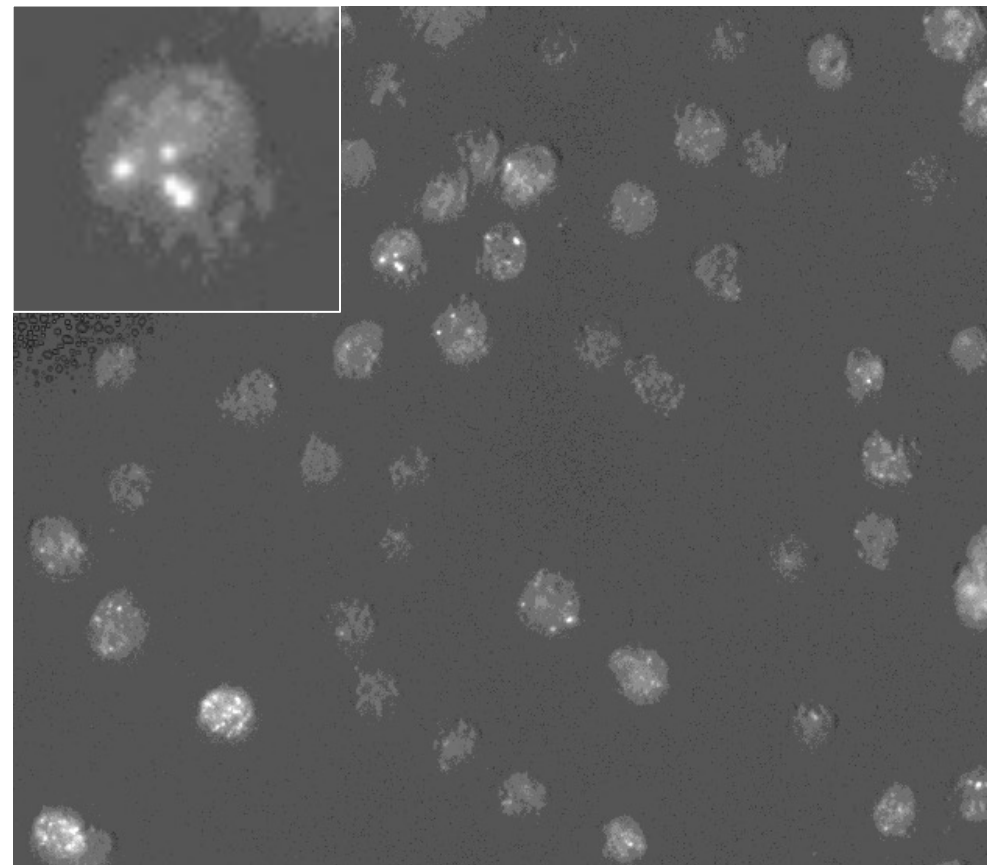
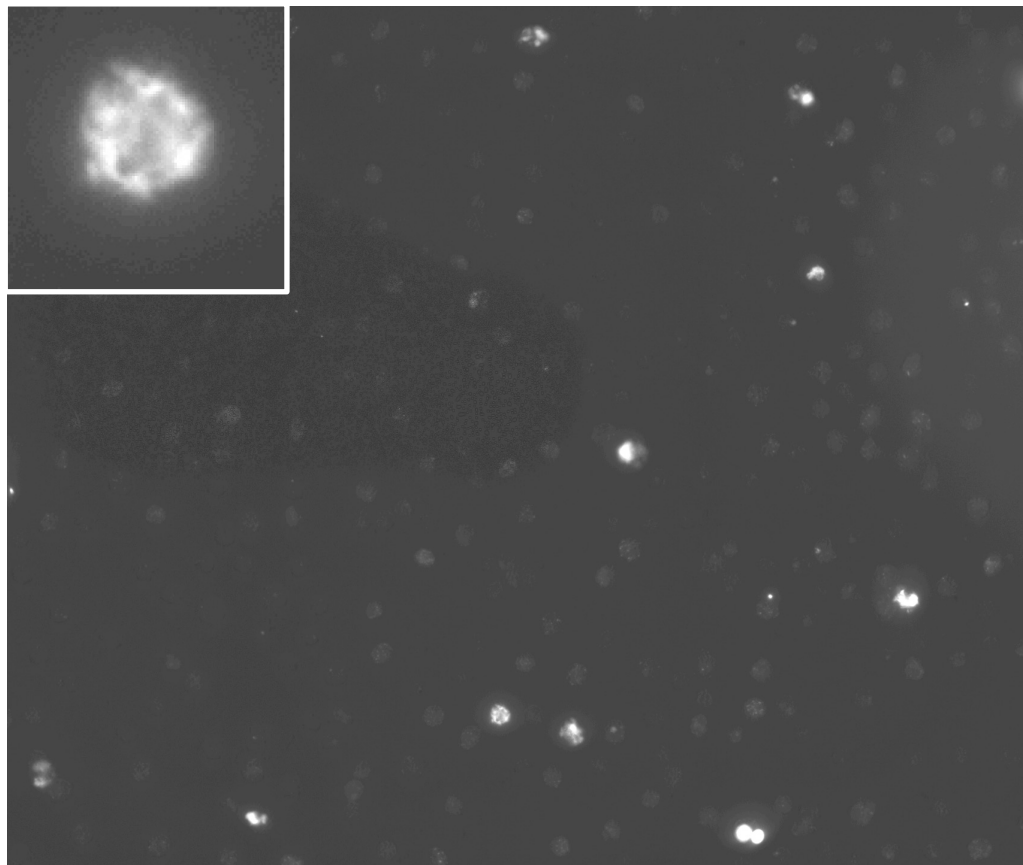
- Zoom back out to original (Reset zoom)
- Take screenshot of image in screen (will keep all nuclei on the same scale)
- Zoom back in to promising nuclei and take screenshot

- Move both images into powerpoint
- With cutout, crop image to highlight nuclei
- Keep the crop the same size across all figures

Notes:

To make same adjustments to other images:

- “Set”->check “propagate to other images”
- Click “Apply” with each image selected



$\text{H}_2\text{O}_2 + \text{As}$

Use wiki guidance!

Format powerpoint slides to
8.5" x 11" in portrait-mode

Work on figure arrangement
so that figure and text all fit
on same slide

A **FIGURE:** Be sure the image is large enough to clearly read, but only large enough to see! If sub-panels are used, label them as A, B, etc., but do not include titles. Include labels on the image if needed, but be sure they are clear and do not obstruct the data.

B

FIGURE TITLE: This should state the conclusion of the figure in very brief and precise language. **CAPTION:** Start with a topic sentence that introduces the figure or sub-panel. Provide all of the information that the reader needs to interpret the figure (define abbreviations, explain labeling scheme, differentiate between sub-panels A, B, etc.). You should not interpret the figure or give minor methods details.

RESULTS SECTION TITLE: This should state a conclusion concerning what you now know given the information provided on this slide...if there is more than one conclusion, consider separating the information into more than one slide.

RESULT(S)/INTERPRETATION(S): Use the questions below to guide the information you provide in your concise bullets.

- What is the overall goal of your experiment?
- What was your expected result according to your hypothesis?
- What evidence do you have that your result is 'correct' or 'incorrect'?
 - What controls did you include and for what did these control?
 - Did the controls work as expected?
- What was the result?
 - Was the result expected?
- In sum, what do these data suggest or indicate?

For Today

- Paper discussion with Noreen
- Work on data summary slide

For M1D6

- Turn in Data Summary slide (revised figure and completed bullet points)