

- Announcements

- ❖ Introducing... Lily, TA for Mod 3

- ❖ Jay Keasling talks @ BC

- Pre-lab Lecture

- ❖ TE toolkit

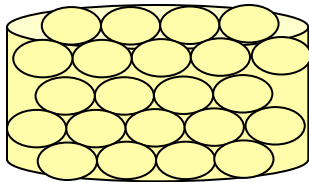
- ❖ Mod 3 overview

- ❖ Today in Lab (Mod 3 Day 1)

Components of a TE construct

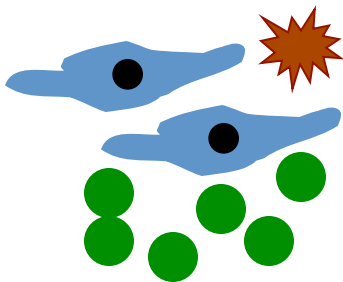
scaffold/matrix

- usually degradable, porous



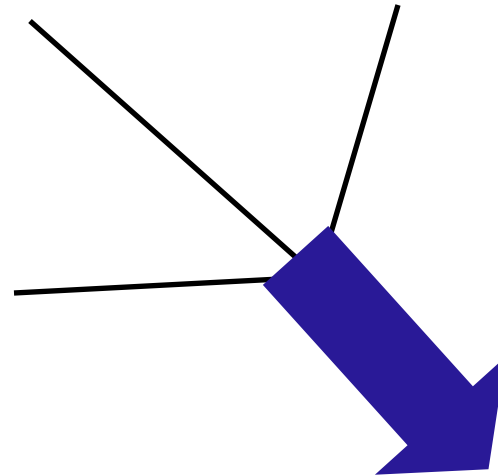
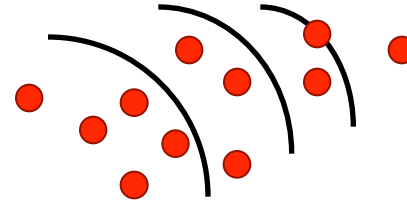
cells

- precursors and/or differentiated
- usually autologous

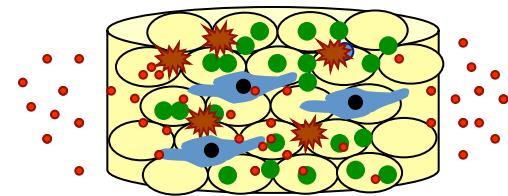


soluble factors

- made by cells or synthetic
- various release profiles



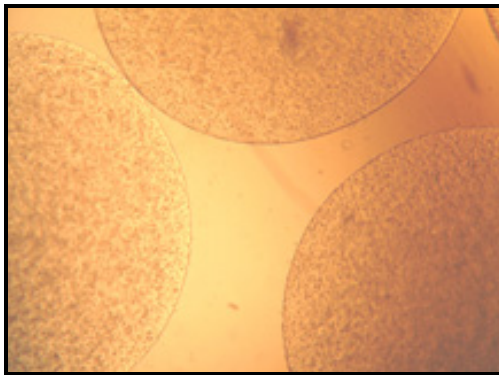
integrated implantable or injectable device



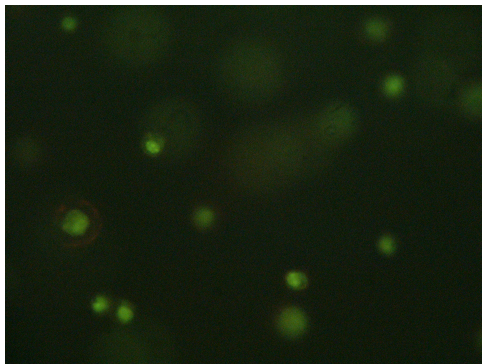
Module overview: lab

Day 1: design

Day 2: seed cultures



Day 3: viability assay

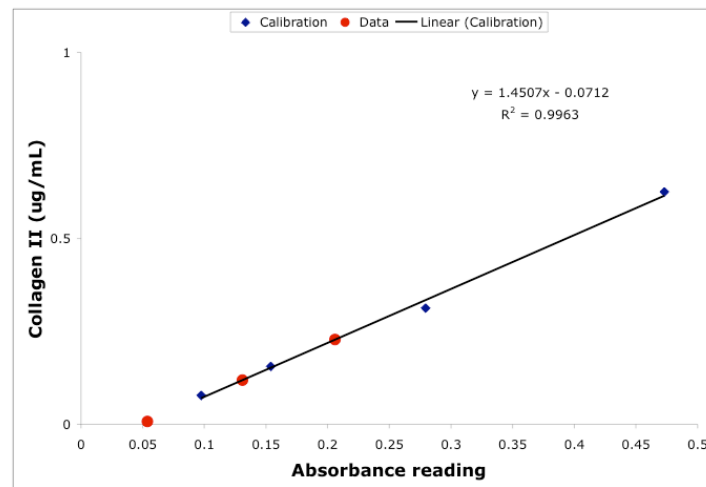
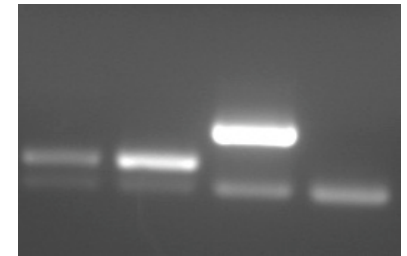


Day 4: prep RNA+cDNA

Day 5: transcript assay

Day 6: protein assay

Day 7: remaining analysis



Day 8: your research ideas!

Today in Lab: Research + Design

- Skim the 7 articles (+ 1 optional)
 - Read abstract
 - Skim methods:
 - Skim results/discussion: summarize in 1-2 sentences
 - Goal:
- Make your own plan
 - Vary one parameter: simple or sophisticated
 - Check cell availability with teaching faculty
 - Request materials/equipment by 3:30 pm if possible
 - Goal: